

MARINE TRANSMISSION CAPACITY TABLES



M. Knöpfli AG
Wiesackerstr. 128
8105 Regensdorf
Tel: ++41 44 840 62 21
info@m-knoepfli.com

JANUARY 2010

Table of Contents

| | |
|---|-------|
| Service Classification | 1 |
| Definitions | |
| Important Application Information | 2 |
| Pleasure Craft. | 5–14 |
| Standard and QuickShift® Marine Transmission Ratings | |
| Light Duty | 15–22 |
| Standard and QuickShift® Marine Transmission Ratings | |
| Intermediate Duty. | 23–34 |
| Standard and QuickShift® Marine Transmission Ratings | |
| Medium Duty. | 35–44 |
| Standard and QuickShift® Marine Transmission Ratings | |
| Continuous Duty | 45–56 |
| Standard and QuickShift® Marine Transmission Ratings | |
| MG-300, MG-500, MG-5000 and MGX-5000. | 57–62 |
| Standard and QuickShift® Marine Transmission Dimensions | |
| MG-6000 and MGX-6000 | 63–65 |
| Standard and QuickShift® Marine Transmission Dimensions | |



SERVICE CLASSIFICATION DEFINITIONS

Pleasure Craft

Up to 500 hours/year, low load factor usage planing hull vessels where typical full engine throttle operation is less than 10% of total time. The balance of operation at 80% of full engine throttle or less. Marine transmissions for use in long range pleasure cruisers, sportfish charter boats/patrol boats do not qualify for Pleasure Craft Service.

Note: Some revenue producing applications such as Planing Hull Bristol Bay Gillnetter do qualify under Pleasure Craft rating definition.

Light Duty

Relatively low hour usage (less than 1500 hours/year) where full throttle operation is 2 hours out of 12. Typical applications include planing hull vessels such as fire boats, sportfish charter boats, and patrol/customs boats. This rating is also applicable to some bow and stern thruster applications.

Intermediate Duty

Hour usage of up to 2000 hours/year (for models MG-5114 and smaller) and up to 3000 hours/year (for models larger than MG-5114) with 50% of the operating time at full engine rating.

Typical applications include planing hull vessels such as ferries, fishing boats, some crew boats, and also some displacement hull yachts as well as some bow and stern thruster applications.

Medium Duty

Hour usage of up to 4000 hours/year with up to 80% of operating time at full engine power. This duty classification is for usage where some variations in engine speed/power occur as part of normal vessel operation.

Typical vessels include mid-water trawlers, crew/supply boats, ferries, and some inland water tow boats.

Continuous Duty

For use in continuous operation with little or no variation in engine speed/power settings.

Typical vessels include fishing trawlers, tow/tug boats and ocean going vessels.

IMPORTANT APPLICATION INFORMATION

- Transmission ratings are based on use of the transmission in a torsionally compatible system utilizing a suitable input torsional coupling.
- Ratings are for diesel engines at the indicated speeds, unless otherwise indicated.
- Ratings are shown in SAE horsepower (HP).
- Consult factory for ratings applicable to gasoline engines, gas turbines, or other applications not conforming to the given service class definitions.
- Ratings apply to right hand engines (i.e., counter-clockwise flywheel rotation when viewing rear of engine).
- Ratings are full power forward or reverse except where specified by "F" (using forward gear train for forward).
- Transmission ratings should equal or exceed the engine's published ratings for the given application.
- Final marine transmission selections are to be confirmed prior to issuance of the purchase order. For unusual or unique applications, please contact Twin Disc, Inc. for product selection assistance.
- Marine transmission input couplings provided by Twin Disc are configured to interface with engine flywheels which conform to SAE J620 standards. Please consult Twin Disc when use of non-standard flywheels are contemplated.
- Most of the transmissions listed herein are to be mounted directly on the SAE flywheel housing of the engine. It is necessary that the engine crankshaft end-play be measured before the driven equipment is installed and rechecked after the driven equipment is installed. The endplay measurements, before and after transmission installation, should be the same. If not the same, the driven equipment should be removed and the problem source located and corrected before the engine is started. Engine crankshaft endplay measurement is considered mandatory.
- The given data is subject to modifications/corrections without prior notice.
- Use certified print for installation.

IMPORTANT NOTICE

Disregarding propulsion system torsional compatibility could cause damage to components in the drive train resulting in loss of mobility. At minimum, system incompatibility could result in gear chatter at low speeds.

The responsibility for ensuring that the torsional compatibility of the propulsion system is satisfactory rests with the assembler of the drive and driven equipment.

Torsional vibration analysis can be made by the engine builder, marine survey societies, independent consultants, and others. Twin Disc is prepared to assist in finding solutions to potential torsional problems that relate to the equipment of Twin Disc Incorporated's supply.



PLEASURE CRAFT RATINGS FOR STANDARD & QUICKSHIFT® MARINE TRANSMISSIONS



| Model | Drawing Number | SAE Housing | Ratios | KILOWATTS (HORSEPOWER) | | | Maximum Speed (rpm) | Dry Weight (kg (lb)) |
|--------------------|----------------|------------------------|--|--|--|--|---------------------|----------------------|
| | | | | @ 2300 RPM | @ 2800 RPM | @ 3200 RPM | | |
| MG-340 | IT101317501 | 5, BW | 1.45 2.00 2.60 | 26 (35) 21 (28) 17 (23) | 26 (35) 26 (35) 21 (28) | 26 (35) 26 (35) 23 (31) | 4500 | 9 (20) |
| MG-360 | IT101318505 | 5, BW | 1.55 2.00 2.45 2.83 | 40 (54) 36 (48) 29 (39) 24 (32) | 50 (67) 44 (59) 35 (47) 29 (39) | 56 (75) 50 (67) 40 (54) 33 (44) | 5000 | 14 (31) |
| MG-5005 A | IT345ATD0001 | 3, 4, 5 | 1.54 2.00 2.47 | 83 (111) 67 (90) 50 (67) | 101 (136) 82 (110) 60 (81) | 110 (148) 93 (125) 70 (94) | 4500 | 25 (55) |
| MG-5012 SC | IT1013079B01 | 3, 4, BW | 1.52 2.09 2.40 2.78 | 123 (165) 106 (142) 94 (126) 82 (110) | 149 (200) 129 (173) 115 (154) 100 (134) | 171 (229) 148 (198) 131 (176) 114 (153) | 4500 | 53 (117) |
| MG-5020 SC | IT1013049B01 | 3, 4, BW | 1.50, 2.04 2.50 2.94 | 181 (242) 145 (194) 123 (165) | 220 (295) 176 (236) 150 (201) | 251 (337) 201 (270) 171 (229) | 4000 | 75 (165) |
| MG-5025 A | IT1013170 | 3, 4, BW | 1.52, 2.09 2.40 | 115 (154) 100 (134) | 140 (188) 123 (165) | 160 (215) 140 (188) | 4500 | 36 (79) |
| MG-5055 A | IT101316101 | 3, 4, BW | 1.53, 2.08 2.60 | 214 (287) 144 (193) | 261 (350) 176 (236) | 298 (400) 201 (270) | 4000 | 54 (119) |
| | | | | @ 2300 RPM | @ 2500 RPM | @ 2800 RPM | | |
| MG-5011 SC* | PX-10270 | 3, 4, BW | 1.11, 1.27, 1.50, 2.00 2.44 | 164 (220) 145 (195) | 177 (237) 157 (210) | 186 (250) 168 (225) | 4400 | 49 (109) |
| MG-5011 A* | PX-9999 | 3, 4, BW | 1.44, 1.90 2.39 | 164 (220) 145 (195) | 177 (237) 157 (210) | 186 (250) 168 (225) | 4400 | 49 (109) |
| MG-5011 IV* | PX-10290 | 3, 4, BW | 1.14, 1.54, 2.06 2.51 | 164 (220) 145 (195) | 177 (237) 157 (210) | 186 (250) 168 (225) | 4400 | 77 (170) |
| MG-5050 SC* | PX-12700 | 1, 2, 3, 4 SPEC. #3 | 1.00, 1.23, 1.53, 1.71, 2.04 2.45 3.00 | 226 (303) 226 (303) 200 (268) | 245 (329) 233 (312) 213 (286) | 272 (365) 261 (350) 231 (310) | 3300 | 86 (189) |
| MG-5050 A* | PX-12730 | 1, 2, 3, 4 SPEC. #3 | 1.12, 1.26, 1.50, 1.80, 2.04 2.50 | 226 (303) 200 (268) | 245 (329) 219 (294) | 272 (365) 239 (320) | 3300 | 80 (176) |
| MG-5050 RV* | PX-8760 | — | 1.12, 1.26, 1.50, 1.80, 2.04 2.50 | 226 (303) 200 (268) | 245 (329) 219 (294) | 272 (365) 239 (320) | 3300 | 73 (160) |
| MG-5061 SC* | PX-11650/A | 1, 2, 3 SPEC. #3 | 1.15, 1.48, 1.77, 2.00 2.43 3.00 | 283 (380) 263 (353) 245 (329) | 308 (413) 286 (384) 266 (357) | 354 (463) 321 (430) 298 (400) | 3300 | 98 (215) |
| MG-5061 A* | PX-11640/A | 1, 2, 3 SPEC. #3 | 1.13, 1.28, 1.54, 1.75, 2.00 2.47 | 283 (380) 263 (353) | 308 (413) 286 (384) | 354 (463) 321 (430) | 3300 | 95 (210) |
| MG-5061 V* | PX-8735 | — | 1.13, 1.28, 1.54, 1.75, 2.00 2.47 | 283 (380) 263 (353) | 308 (413) 286 (384) | 354 (463) 321 (430) | 3300 | 86 (190) |
| MG-5062 V* | PX-11660/A | 1, 2, 3 SPEC. #3 | 1.19, 1.53, 1.83 2.07, 2.51 | 283 (380) 263 (353) | 313 (420) 286 (384) | 354 (475) 321 (430) | 3300 | 142 (312) |
| MGX-5065 SC | PX-12410 | 1, 2, 3 SPEC. #3 | 1.08, 1.26, 1.47, 1.72, 2.04 2.43 | 393 (527) 368 (493) | 425 (570) 400 (536) | 474 (636) 448 (601) | 3300 | 111 (244) |
| MGX-5065 A | PX-12370 | 1, 2, 3 SPEC. #3 | 1.08, 1.26, 1.47, 1.72, 2.04 2.43 | 393 (527) 368 (493) | 425 (570) 400 (536) | 474 (636) 448 (601) | 3300 | 111 (244) |
| MG-5065 SC | PX-11480 | 1, 2, 3 SPEC. #3 | 1.08, 1.26, 1.47, 1.72, 2.04 2.43 | 393 (527) 368 (493) | 425 (570) 400 (536) | 474 (636) 448 (601) | 3300 | 111 (244) |
| MG-5065 A | PX-11165 | 1, 2, 3 SPEC. #3 | 1.08, 1.26, 1.47, 1.72, 2.04 2.43 | 393 (527) 368 (493) | 425 (570) 400 (536) | 474 (636) 448 (601) | 3300 | 111 (244) |

Important – See rating definitions, application information, and torsional compatibility notices on pages 1 and 2.
Ratings shown are in SAE Horsepower (HP). Metric Horsepower equals SAE times 1.014.
Weights are approximate and include flywheel housing adapter and flexible input coupling.

* Consult Twin Disc for gasoline engine ratings.



PLEASURE CRAFT RATINGS FOR STANDARD & QUICKSHIFT® MARINE TRANSMISSIONS (Continued)



| Model | Drawing Number | SAE Housing | Ratios | KILOWATTS (HORSEPOWER) | | | Maximum Speed (rpm) | Dry Weight kg (lb) |
|--------------------|----------------|---------------------|--|-------------------------------------|-------------------------------------|-------------------------------------|---------------------|--------------------|
| | | | | @ 2300 RPM | @ 2500 RPM | @ 2800 RPM | | |
| MGX-5075 SC | PX-12620 | 1, 2, 3 SPEC. #3 | 1.06, 1.22, 1.33, 1.53, 1.77, 2.05 2.53 2.88 | 423 (567) 380 (510) 373 (500) | 455 (610) 410 (550) 403 (540) | 503 (675) 453 (607) 434 (582) | 3500 | 122 (268) |
| MGX-5075 A | PX-12610 | 1, 2, 3 SPEC. #3 | 1.06, 1.22, 1.33, 1.53, 1.77, 2.05 2.53 2.88 | 423 (567) 380 (510) 373 (500) | 455 (610) 410 (550) 403 (540) | 503 (675) 453 (607) 434 (582) | 3500 | 122 (268) |
| MGX-5075 IV | PX-12630 | 1, 2, 3 SPEC. #3 | 1.03, 1.30, 1.49, 1.72, 1.99, 2.46 | 392 (526) | 423 (567) | 468 (628) | 3500 | 150 (330) |
| MG-5075 SC | PX-11876 | 1, 2, 3 SPEC. #3 | 0.80, 0.92, 1.01, 1.16 | 380 (510) | 410 (550) | 453 (607) | 3000 | 122 (268) |
| MG-5075 SC | PX-10680/-A | 1, 2, 3 SPEC. #3 | 1.06, 1.22, 1.33, 1.53, 1.77, 2.05 2.53 2.88 | 423 (567) 380 (510) 373 (500) | 455 (610) 410 (550) 403 (540) | 503 (675) 453 (607) 434 (582) | 3500 | 122 (268) |
| MG-5075 A | PX-10700/-A | 1, 2, 3 SPEC. #3 | 1.06, 1.22, 1.33, 1.53, 1.77, 2.05 2.53 2.88 | 423 (567) 380 (510) 373 (500) | 455 (610) 410 (550) 403 (540) | 503 (675) 453 (607) 434 (582) | 3500 | 122 (268) |
| MG-5075 IV | PX-11530-A | 1, 2, 3 SPEC. #3 | 1.03, 1.30, 1.49, 1.72, 1.99, 2.46 | 392 (526) | 423 (567) | 468 (628) | 3500 | 150 (330) |
| | | | | @ 2100 RPM | @ 2300 RPM | @ 2500 RPM | | |
| MG-5085 SC | PX-9260-B/-C | 1, 2, 3 SPEC. #3 | 1.05, 1.22, 1.42, 1.76 1.96 2.33 | 416 (558) 374 (502) 343 (460) | 433 (580) 410 (550) 365 (490) | 459 (615) 445 (597) 388 (520) | 3200 | 120 (265) |
| MG-5085 A | PX-9360-B/-C | 1, 2, 3 SPEC. #3 | 1.05, 1.22, 1.47, 1.72 2.04 2.43 | 416 (558) 374 (502) 343 (460) | 433 (580) 410 (550) 365 (490) | 459 (615) 445 (597) 388 (520) | 3200 | 123 (270) |
| MG-5082 SC | PX-11250-A | 1, 2 | 1.06, 1.33, 1.53, 1.77, 2.05 2.53 2.88 | 490 (657) 462 (620) 428 (574) | 522 (700) 492 (660) 447 (600) | 543 (728) 521 (699) 465 (624) | 3200 | 135 (298) |
| MG-5082 A | PX-11040-B | 1, 2 | 1.06, 1.33, 1.53, 1.77, 2.05 2.53 2.88 | 490 (657) 462 (620) 428 (574) | 530 (710) 492 (660) 447 (600) | 543 (728) 521 (699) 465 (624) | 3200 | 135 (298) |
| MGX-5086 SC | PX-12600 | 1, 2 | 1.06, 1.33, 1.53, 1.77, 2.05 2.53 2.88 | 490 (657) 462 (620) 428 (574) | 522 (700) 492 (660) 447 (600) | 543 (728) 521 (699) 465 (624) | 3200 | 135 (298) |
| MGX-5086 A | PX-12290 | 1, 2 | 1.06, 1.33, 1.53, 1.77, 2.05 2.53 2.88 | 490 (657) 462 (620) 428 (574) | 530 (710) 492 (660) 447 (600) | 543 (728) 521 (699) 465 (624) | 3200 | 135 (298) |
| MG-5091 SC | PX-10016 | 1, 2 | 1.17, 1.45, 1.71, 2.04 2.45 2.95 | 480 (643) 433 (580) 409 (548) | 522 (700) 474 (635) 447 (600) | 539 (723) 500 (670) 470 (630) | 3000 | 220 (485) |
| MG-5090 A | PX-10015 | 1, 2 | 1.45, 1.73, 1.96 2.43 | 484 (649) 433 (580) | 530 (710) 474 (635) | 539 (723) 500 (670) | 3000 | 216 (475) |
| MGX-5095 SC | PX-12480 | 1, 2 | 1.15, 1.27, 1.47, 1.71, 2.00, 2.46 2.95 | 544 (730) 510 (684) | 597 (800) 560 (751) | 634 (850) 608 (815) | 3000 | 190 (419) |
| MGX-5095 A | PX-12360 | 1, 2 | 1.28, 1.52, 1.81, 2.04 2.48 | 560 (751) 521 (699) | 597 (800) 560 (751) | 634 (850) 599 (803) | 3000 | 185 (407) |
| MGX-5095 RV | PX-12550 | — | 1.28, 1.52, 1.81, 2.04 2.48 | 560 (751) 521 (699) | 597 (800) 560 (751) | 634 (850) 599 (803) | 3000 | 178 (392) |
| MG-5095 SC | PX-11535 | 1, 2 | 1.15, 1.27, 1.47, 1.71, 2.00, 2.46 | 544 (730) 510 (684) | 597 (800) 560 (751) | 634 (850) 608 (815) | 3000 | 190 (419) |
| MG-5095 A | PX-11495 | 1, 2 | 1.28, 1.52, 1.81, 2.04 2.48 | 560 (751) 521 (699) | 597 (800) 560 (751) | 634 (850) 599 (803) | 3000 | 185 (407) |
| MG-5095 RV | PX-11600 | — | 1.28, 1.52, 1.81, 2.04 2.48 | 560 (751) 521 (699) | 597 (800) 560 (751) | 634 (850) 599 (803) | 3000 | 178 (392) |

Important – See rating definitions, application information, and torsional compatibility notices on pages 1 and 2.
Ratings shown are in SAE Horsepower (HP). Metric Horsepower equals SAE times 1.014.
Weights are approximate and include flywheel housing adapter and flexible input coupling.



PLEASURE CRAFT RATINGS FOR STANDARD & QUICKSHIFT® MARINE TRANSMISSIONS (Continued)



| Model | Drawing Number | SAE Housing | Ratios | KILOWATTS (HORSEPOWER) | | | Maximum Speed (rpm) | Dry Weight kg (lb) |
|-----------------------|----------------------------|-------------|--|--------------------------------------|--|--|------------------------------------|--------------------|
| | | | | @ 2100 RPM | @ 2300 RPM | @ 2500 RPM | | |
| MGX-5114 SC | PX-12490 | 1 | 0.93, 1.02, 1.12, 1.50, 1.74, 2.04, 2.54 3.00 | 619 (830) 528 (708) | 673 (900) 578 (775) | 716 (960) 629 (843) | 2800 for 0.93:1 3000 for others | 203 (447) |
| MGX-5114 SC-HD | PX-12860 | 1 | 1.50, 1.74, 2.04, 2.54 3.00 | 619 (830) 528 (708) | 673 (900) 578 (775) | 716 (960) 629 (843) | 3000 | 270 (595) |
| MGX-5114 DC | PX-12170 | 1 | 3.28, 3.43, 4.17 4.59 4.86 | 619 (830) 579 (776) 567 (760) | 673 (900) 634 (850) 604 (810) | 701 (940) 679 (911) 634 (850) | 3000 | 360 (793) |
| MGX-5114 A | 1024390 | 1, 2 | 1.03, 1.20, 1.48, 1.75, 1.92 2.04, 2.50 | 619 (830) | 673 (900) | 701 (940) | 3000 | 206 (455) |
| MGX-5114 RV | PX-11850 | — | 1.03, 1.20, 1.48, 1.75, 1.92 2.04, 2.50 | 619 (830) | 673 (900) | 701 (940) | 3000 | 198 (435) |
| MGX-5114 IV | PX-12510 | 1, 2 | 1.05, 1.23, 1.52, 1.80, 1.97 2.57 | 619 (830) 599 (803) | 673 (900) 649 (870) | 701 (940) 677 (908) | 3000 | 270 (595) |
| MG-5114 SC | PX-9785-B | 1 | 0.93, 1.02, 1.12, 1.50, 1.74, 2.04, 2.54 3.00 | 619 (830) 528 (708) | 673 (900) 578 (775) | 716 (960) 629 (843) | 2800 for 0.93:1 3000 for others | 203 (447) |
| MG-5114 DC | PX-10250-A PX-12195(FS) | 1 Ind. | 3.28, 3.43, 4.17 4.59 4.86 | 619 (830) 579 (776) 567 (760) | 673 (900) 634 (850) 604 (810) | 701 (940) 679 (911) 634 (850) | 3000 | 368 (810) |
| MG-5114 A | PX-11915 | 1, 2 | 1.03, 1.20, 1.48, 1.75, 1.92 2.04, 2.50 | 619 (830) | 673 (900) | 701 (940) | 3000 | 206 (455) |
| MG-5114 RV | PX-9830-A | — | 1.03, 1.20, 1.48, 1.75, 1.92 2.04, 2.50 | 619 (830) | 673 (900) | 701 (940) | 3000 | 198 (435) |
| MG-5114 IV | PX-11920 | 1, 2 | 1.05, 1.23, 1.52, 1.80, 1.97 2.57 | 619 (830) 599 (803) | 673 (900) 649 (870) | 701 (940) 677 (908) | 3000 | 270 (595) |
| | | | | @ 2100 RPM | @ 2300 RPM | @ 2450 RPM | | |
| MGX-5135 SC | PX-12450 | 1, 0 | 1.10, 1.28, 1.48, 1.73, 2.04 2.57 2.90 | 817 (1096) 734 (984) 668 (896) | 895 (1200) 820 (1100) 746 (1000) | 954 (1279) 873 (1170) 794 (1065) | 2800 | 300 (661) |
| MGX-5135 A | PX-12380 | 1, 0 | 1.16, 1.25, 1.53, 1.79, 2.00 2.52 | 817 (1096) 734 (984) | 895 (1200) 820 (1100) | 954 (1279) 873 (1170) | 2800 | 280 (617) |
| MGX-5135 RV | PX-12520 | — | 1.16, 1.25, 1.53, 1.79, 2.00 2.52 | 817 (1096) 734 (984) | 895 (1200) 820 (1100) | 954 (1279) 873 (1170) | 2800 | 258 (568) |
| MG-5135 SC | PX-11590 | 1, 0 | 1.10, 1.28, 1.48, 1.73, 2.04 2.57 2.90 | 817 (1096) 734 (984) 668 (896) | 895 (1200) 820 (1100) 746 (1000) | 954 (1279) 873 (1170) 794 (1065) | 2800 | 300 (661) |
| MG-5135 A | PX-11380 | 1, 0 | 1.16, 1.25, 1.53, 1.79, 2.00 2.52 | 817 (1096) 734 (984) | 895 (1200) 820 (1100) | 954 (1279) 873 (1170) | 2800 | 280 (617) |
| MG-5135 RV | PX-11945 | — | 1.16, 1.25, 1.53, 1.79, 2.00 2.52 | 817 (1096) 734 (984) | 895 (1200) 820 (1100) | 954 (1279) 873 (1170) | 2800 | 258 (568) |
| MGX-5145 SC | PX-12460 | 1, 0 | 1.03, 1.20, 1.33, 1.48, 1.75, 1.96 2.50 | 949 (1273) 841 (1128) | 1007 (1350) 916 (1228) | 1050 (1408) 963 (1291) | 2500 | 325 (716) |
| MGX-5145 A | PX-12420 | 1, 0 | 1.26, 1.48, 1.75, 1.96 2.50 | 949 (1273) 878 (1177) | 1007 (1350) 956 (1282) | 1050 (1408) 1004 (1346) | 2500 | 333 (734) |
| MGX-5145 RV | PX-12530 | — | 1.26, 1.48, 1.75, 1.96 2.50 | 949 (1273) 878 (1177) | 1007 (1350) 956 (1282) | 1050 (1408) 1004 (1346) | 2500 | 295 (650) |
| MG-5145 SC | PX-10885 | 1, 0 | 1.03, 1.20, 1.33, 1.48, 1.75, 1.96 2.50 | 949 (1273) 841 (1128) | 1007 (1350) 916 (1228) | 1050 (1408) 963 (1291) | 2500 | 325 (716) |
| MG-5145 A | PX-10830 | 1, 0 | 1.26, 1.48, 1.75, 1.96 2.50 | 949 (1273) 878 (1177) | 1007 (1350) 956 (1282) | 1050 (1408) 1004 (1346) | 2500 | 333 (734) |
| MG-5145 RV | PX-10880 | — | 1.26, 1.48, 1.75, 1.96 2.50 | 949 (1273) 878 (1177) | 1007 (1350) 956 (1282) | 1050 (1408) 1004 (1346) | 2500 | 295 (650) |

Important – See rating definitions, application information, and torsional compatibility notices on pages 1 and 2.
Ratings shown are in SAE Horsepower (HP). Metric Horsepower equals SAE times 1.014.
Weights are approximate and include flywheel housing adapter and flexible input coupling.



PLEASURE CRAFT RATINGS FOR STANDARD & QUICKSHIFT® MARINE TRANSMISSIONS (Continued)



| Model | Drawing Number | SAE Housing | Ratios | KILOWATTS (HORSEPOWER) | | | Maximum Speed (rpm) | Dry Weight (kg (lb)) |
|--------------------|----------------|---------------|--|--|--|--|--------------------------------------|----------------------|
| | | | | @ 2100 RPM | @ 2300 RPM | @ 2450 RPM | | |
| MGX-5147 SC | PX-12470-A | 1, 0 | 1.20, 1.33, 1.48, 1.57, 1.75, 1.96 2.50 | 1070 (1435) 875 (1173) | 1142 (1531) 952 (1277) | 1195 (1603) 1001 (1342) | 2500 | 325 (716) |
| MGX-5147 A | PX-12430-A | 1, 0 | 1.26, 1.48, 1.75, 1.96 2.50 | 1070 (1435) 931 (1248) | 1142 (1531) 1014 (1360) | 1195 (1603) 1065 (1428) | 2500 | 333 (734) |
| MGX-5147 RV | PX-12540-A | — | 1.26, 1.48, 1.75, 1.96 2.50 | 1070 (1435) 931 (1248) | 1142 (1531) 1014 (1360) | 1195 (1603) 1065 (1428) | 2500 | 295 (650) |
| MG-5202 SC | 1016103-C | 1, 0 Ind. | 1.17, 1.33, 1.53, 1.76, 2.03, 2.48, 2.92 3.48 | 886 (1188) 742 (995) | 969 (1300) 800 (1073) | 1019 (1366) 841 (1128) | 2750 (2500 at 1.17:1) | 587 (1292) |
| MG-5203 SC | 1016249-A | 1, 0 Ind. | 1.17, 1.33, 1.53, 1.76, 2.03, 2.48, 2.92 3.48 | 886 (1188) 742 (995) | 969 (1300) 800 (1073) | 1019 (1366) 841 (1128) | 2750 (2500 at 1.17:1) | 409 (900) |
| MG-5204 SC | 1016250-B | 1, 0 Ind. | 1.17, 1.33, 1.53, 1.76, 2.03, 2.48, 2.92 3.48 | 1029 (1380) 984 (1320) | 1104 (1480) 1081 (1450) | 1104 (1480) 1081 (1450) | 2750 (2500 at 1.17:1) | 409 (900) |
| MG-6449 A | 7-37423 | 1, 0 Ind. | 1.51, 1.73, 2.07, 2.44 2.95 | 1007 (1350) 715 (959) | 1104 (1480) 782 (1050) | 1104 (1480) 782 (1050) | 2500 | 344 (757) |
| MG-6449 RV | 7-37431-A | — | 1.51, 1.73, 2.07, 2.44 2.95 | 1007 (1350) 715 (959) | 1104 (1480) 782 (1050) | 1104 (1480) 782 (1050) | 2500 | 325 (716) |
| MGX-6598 DC | 7-40379 | 1, 0 Ind. | 2.46, 3.03, 3.48 3.93 4.43 | 1335 (1790) 1226 (1644) 1070 (1435) | 1462 (1961) 1343 (1801) 1172 (1572) | 1557 (2088) 1399 (1876) 1249 (1674) | 2500 | 580 (1278) |
| MGX-6599 SC | 7-40384 | 1, 0 Ind. | 1.07, 1.30, 1.50, 1.66 1.74, 1.97, 2.04, 2.19 2.45 2.82 | 1326 (1778) 1295 (1737) 1226 (1644) 1056 (1416) | 1452 (1947) 1418 (1902) 1343 (1801) 1156 (1550) | 1518 (2036) 1510 (2024) 1431 (1919) 1232 (1652) | 2500 | 492 (1084) |
| MGX-6599 A | 7-40263 | 1, 0 Ind. | 1.34, 1.51, 1.74, 2.03, 2.24 2.48 2.80 | 1295 (1737) 1226 (1644) 1056 (1416) | 1418 (1902) 1343 (1801) 1156 (1550) | 1510 (2024) 1431 (1919) 1232 (1652) | 2500 | 488 (1075) |
| MGX-6599 RV | 7-40336 | — | 1.34, 1.51, 1.74, 2.03, 2.24 2.48 2.80 | 1295 (1737) 1226 (1644) 1056 (1416) | 1418 (1902) 1343 (1801) 1156 (1550) | 1510 (2024) 1431 (1919) 1232 (1652) | 2500 | 468 (1031) |
| MG-6600 DC | 7-36712-A | 0 Ind. | 3.30, 4.11 4.68, 4.72 5.21 6.05 | 1319 (1769) 1225 (1643) 1103 (1479) 987 (1324) | 1445 (1938) 1342 (1800) 1208 (1620) 1081 (1450) | 1539 (2064) 1430 (1918) 1287 (1726) 1152 (1545) | 2500 | 794 (1747) |
| MGX-6620 SC | 7-40337 | 0 Ind. | 1.15, 1.33, 1.53, 1.73 2.03, 2.32, 2.44 2.72 | 1430 (1918) 1430 (1918) 1342 (1800) | 1566 (2100) 1566 (2100) 1470 (1971) | 1668 (2237) 1668 (2237) 1556 (2087) | 2500 | 575 (1267) |
| MGX-6620 A | 7-40264 | 0 Ind. | 1.55, 1.72, 2.09, 2.28, 2.42 2.73 | 1430 (1918) 1373 (1841) | 1566 (2100) 1504 (2017) | 1668 (2237) 1602 (2148) | 2500 | 580 (1278) |
| MGX-6620 RV | 7-40316 | — | 1.55, 1.72, 2.09, 2.28, 2.42 2.73 | 1430 (1918) 1373 (1841) | 1566 (2100) 1504 (2017) | 1668 (2237) 1602 (2148) | 2500 | 510 (1123) |
| MGX-6650 SC | 1002046 | 0, 00 Ind. | 1.51, 1.88, 2.03, 2.37 2.47, 2.81, 2.93, 3.21 | 1430 (1918) | 1566 (2100) | 1602 (2148) | 2300 (1.51–2.37) 2500 (2.47–3.21) | 1001 (2205) |
| MGX-6690 SC | 1020674 | 0, 00 Ind. | 1.51, 1.88, 2.03, 2.37 2.47, 2.81, 2.93, 3.21 | 1534 (2057) | 1680 (2253) | 1790 (2400) | 2300 (1.51–2.37) 2500 (2.47–3.21) | 1001 (2205) |
| MGX-6848 SC | 1020675 | 0, 00 | 1.51, 1.88, 2.03, 2.37 2.47 2.58, 2.93 3.21 | 1864 (2500) 1864 (2500) 1891 (2536) 1526 (2046) | 2028 (2720) 2028 (2720) 1891 (2536) 1653 (2217) | — 2147 (2879) 2001 (2682) 1748 (2343) | 2300 (1.51–2.37) 2500 (2.47–3.21) | 1001 (2205) |

Important – See rating definitions, application information, and torsional compatibility notices on pages 1 and 2.
Ratings shown are in SAE Horsepower (HP). Metric Horsepower equals SAE times 1.014.
Weights are approximate and include flywheel housing adapter and flexible input coupling.



PLEASURE CRAFT RATINGS FOR STANDARD & QUICKSHIFT® MARINE TRANSMISSIONS (Continued)



| Model | Drawing Number | SAE Housing | Ratios | KILOWATTS (HORSEPOWER) | | | Maximum Speed (rpm) | Dry Weight (kg (lb)) |
|--------------------|---------------------------------|-----------------|--|--|--|--|---------------------|----------------------|
| | | | | @ 1600 RPM | @ 1800 RPM | @ 2100 RPM | | |
| MG-6984 SC | 7-37008 7-37481 P-71034-B | Ind. 0 00 | 1.18, 1.54, 2.06, 2.29, 2.52 2.92 3.25 3.43 | 1693 (2270) 1648 (2210) 1466 (1966) 1364 (1829) | 1905 (2555) 1854 (2486) 1649 (2211) 1534 (2057) | 2222 (2980) 2163 (2900) 1924 (2580) 1790 (2400) | 2100 | 1192 (2628) |
| MG-6984 A | 7-37028 P-71093 P-71094 | Ind. 0 00 | 1.48, 1.97, 2.50 2.79 2.93 | 1693 (2270) 1682 (2256) 1642 (2202) | 1905 (2555) 1892 (2537) 1847 (2477) | 2222 (2980) 2207 (2960) 2155 (2890) | 2100 | 909 (2000) |
| MG-6984 RV | 7-37042 | – | 1.48, 1.97, 2.50 2.79 2.93 | 1693 (2270) 1682 (2256) 1642 (2202) | 1905 (2555) 1892 (2537) 1847 (2477) | 2222 (2980) 2207 (2960) 2155 (2890) | 2100 | 909 (2000) |
| MG-61242 SC | 7-37017 | Ind. | 1.16, 1.52, 2.08, 2.47 2.96 | 2176 (2918) 2091 (2804) | 2448 (3283) 2353 (3155) | 2856 (3830) 2745 (3681) | 2100 | 1050 (2310) |
| MG-61242 A | 7-37046 | Ind. | 1.42, 2.07, 2.44 2.93 | 2176 (2918) 2074 (2781) | 2448 (3283) 2333 (3129) | 2856 (3830) 2722 (3650) | 2100 | 1105 (2431) |
| MG-61242 RV | 7-37049 | – | 1.42, 2.07, 2.44 2.93 | 2176 (2918) 2074 (2781) | 2448 (3283) 2333 (3129) | 2856 (3830) 2722 (3650) | 2100 | 1105 (2431) |

Important – See rating definitions, application information, and torsional compatibility notices on pages 1 and 2.
 Ratings shown are in SAE Horsepower (HP). Metric Horsepower equals SAE times 1.014.
 Weights are approximate and include flywheel housing adapter and flexible input coupling.



LIGHT DUTY RATINGS FOR STANDARD & QUICKSHIFT® MARINE TRANSMISSIONS



| Model | Drawing Number | SAE Housing | Ratios | KILOWATTS (HORSEPOWER) | | | Maximum Speed (rpm) | Dry Weight (kg (lb)) |
|--------------------|----------------|------------------------|--|-------------------------------------|-------------------------------------|-------------------------------------|---------------------|----------------------|
| | | | | @ 2300 RPM | @ 2500 RPM | @ 2800 RPM | | |
| MG-5011 SC* | PX-10270 | 3, 4, BW | 1.11, 1.27, 1.50, 2.00 2.44 | 153 (205) 136 (182) | 165 (221) 146 (196) | 174 (233) 157 (211) | 4400 | 49 (109) |
| MG-5011 A* | PX-9999 | 3, 4, BW | 1.44, 1.90 2.39 | 153 (205) 136 (182) | 165 (221) 146 (196) | 174 (233) 157 (211) | 4400 | 49 (109) |
| MG-5011 IV* | PX-10290 | 3, 4, BW | 1.14, 1.54, 2.06 2.51 | 153 (205) 136 (182) | 165 (221) 146 (196) | 174 (233) 157 (211) | 4400 | 77 (170) |
| MG-5050 SC* | PX-12700 | 1, 2, 3, 4 SPEC. #3 | 1.00, 1.23, 1.53, 1.71, 2.04 2.45 3.00 | 211 (283) 211 (283) 187 (251) | 228 (306) 216 (290) 198 (266) | 254 (341) 223 (299) 216 (290) | 3300 | 86 (189) |
| MG-5050 A* | PX-12730 | 1, 2, 3, 4 SPEC. #3 | 1.12, 1.26, 1.50, 1.80, 2.04 2.50 | 211 (283) 187 (251) | 228 (306) 204 (274) | 254 (341) 223 (299) | 3300 | 80 (176) |
| MG-5050 RV* | PX-8760 | — | 1.12, 1.26, 1.50, 1.80, 2.04 2.50 | 211 (283) 187 (251) | 228 (306) 204 (274) | 254 (341) 223 (299) | 3300 | 73 (160) |
| MG-5061 SC* | PX-11650/-A | 1, 2, 3 SPEC. #3 | 1.15, 1.48, 1.77, 2.00 2.43 3.00 | 265 (355) 246 (330) 229 (307) | 288 (386) 268 (360) 248 (333) | 323 (433) 300 (402) 279 (374) | 3300 | 98 (215) |
| MG-5061 A* | PX-11640/-A | 1, 2, 3 SPEC. #3 | 1.13, 1.28, 1.54, 1.75 2.00, 2.47 | 257 (345) 246 (330) | 281 (377) 268 (360) | 313 (420) 300 (402) | 3300 | 95 (210) |
| MG-5061 V* | PX-8735 | — | 1.13, 1.28, 1.54, 1.75 2.00, 2.47 | 257 (345) 246 (330) | 281 (377) 268 (360) | 313 (420) 300 (402) | 3300 | 86 (190) |
| MG-5062 V* | PX-11660/-A | 1, 2, 3 SPEC. #3 | 1.19, 1.53, 1.83 2.07, 2.51 | 265 (355) 246 (330) | 292 (392) 268 (360) | 331 (444) 300 (402) | 3300 | 142 (312) |
| MGX-5065 SC | PX-12410 | 1, 2, 3 SPEC. #3 | 1.08, 1.26, 1.47, 1.72, 2.04 2.43 | 376 (504) 351 (471) | 407 (546) 381 (511) | 453 (607) 428 (574) | 3300 | 111 (244) |
| MGX-5065 A | PX-12370 | 1, 2, 3 SPEC. #3 | 1.08, 1.26, 1.47, 1.72, 2.04 2.43 | 376 (504) 351 (471) | 407 (546) 381 (511) | 453 (607) 428 (574) | 3300 | 111 (244) |
| MG-5065 SC | PX-11480 | 1, 2, 3 SPEC. #3 | 1.08, 1.26, 1.47, 1.72, 2.04 2.43 | 376 (504) 351 (471) | 407 (546) 381 (511) | 453 (607) 428 (574) | 3300 | 111 (244) |
| MG-5065 A | PX-11165 | 1, 2, 3 SPEC. #3 | 1.08, 1.26, 1.47, 1.72, 2.04 2.43 | 376 (504) 351 (471) | 407 (546) 381 (511) | 453 (607) 428 (574) | 3300 | 111 (244) |
| MGX-5075 SC | PX-12620 | 1, 2, 3 SPEC. #3 | 1.06, 1.22, 1.33, 1.53, 1.77, 2.05 2.53 2.88 | 368 (493) 355 (476) 348 (467) | 390 (523) 383 (514) 375 (503) | 433 (581) 423 (567) 406 (544) | 3500 | 122 (268) |
| MGX-5075 A | PX-12610 | 1, 2, 3 SPEC. #3 | 1.06, 1.22, 1.33, 1.53, 1.77, 2.05 2.53 2.88 | 368 (493) 355 (476) 348 (467) | 390 (523) 383 (514) 375 (503) | 433 (581) 423 (567) 406 (544) | 3500 | 122 (268) |
| MGX-5075 IV | PX-12630 | 1, 2, 3 SPEC. #3 | 1.03, 1.30, 1.49, 1.72, 1.99, 2.46 | 355 (476) | 383 (514) | 423 (567) | 3500 | 150 (330) |
| MG-5075 SC | PX-11876 | 1, 2, 3 SPEC. #3 | 0.80, 0.92, 1.01, 1.16 | 355 (476) | 383 (514) | 423 (567) | 3000 | 122 (268) |
| MG-5075 SC | PX-10680/-A | 1, 2, 3 SPEC. #3 | 1.06, 1.22, 1.33, 1.53, 1.77, 2.05 2.53 2.88 | 368 (493) 355 (476) 348 (467) | 390 (523) 383 (514) 375 (503) | 433 (581) 423 (567) 406 (544) | 3500 | 122 (268) |
| MG-5075 A | PX-10700/-A | 1, 2, 3 SPEC. #3 | 1.06, 1.22, 1.33, 1.53, 1.77, 2.05 2.53 2.88 | 368 (493) 355 (476) 348 (467) | 390 (523) 383 (514) 375 (503) | 433 (581) 423 (567) 406 (544) | 3500 | 122 (268) |
| MG-5075 IV | PX-11530 | 1, 2, 3 SPEC. #3 | 1.03, 1.30, 1.49, 1.72, 1.99, 2.46 | 355 (476) | 383 (514) | 423 (567) | 3500 | 150 (330) |
| | | | | @ 2100 RPM | @ 2300 RPM | @ 2500 RPM | | |
| MG-5085 SC | PX-9260-B/-C | 1, 2, 3 SPEC. #3 | 1.05, 1.22, 1.42, 1.76 1.96 2.33 | 389 (522) 348 (467) 321 (430) | 404 (542) 383 (514) 342 (459) | 429 (575) 416 (558) 362 (485) | 3200 | 120 (265) |
| MG-5085 A | PX-9360-B/-C | 1, 2, 3 SPEC. #3 | 1.05, 1.22, 1.47, 1.72 2.04 2.43 | 389 (522) 355 (476) 321 (430) | 404 (542) 383 (514) 342 (459) | 429 (575) 416 (558) 362 (485) | 3200 | 123 (270) |

Important — See rating definitions, application information, and torsional compatibility notices on pages 1 and 2.
Ratings shown are in SAE Horsepower (HP). Metric Horsepower equals SAE times 1.014.
Weights are approximate and include flywheel housing adapter and flexible input coupling.

* Consult Twin Disc for gasoline engine ratings.



LIGHT DUTY RATINGS FOR STANDARD & QUICKSHIFT® MARINE TRANSMISSIONS (Continued)



| Model | Drawing Number | SAE Housing | Ratios | KILOWATTS (HORSEPOWER) | | | Maximum Speed (rpm) | Dry Weight (kg (lb)) |
|-----------------------|----------------------------|-------------|--|-------------------------------------|-------------------------------------|-------------------------------------|----------------------------------|----------------------|
| | | | | @ 2100 RPM | @ 2300 RPM | @ 2500 RPM | | |
| MG-5082 SC | PX-11250-A | 1, 2 | 1.06, 1.33, 1.53, 1.77, 2.05, 2.53 2.88 | 432 (579) 400 (536) | 460 (617) 418 (560) | 487 (653) 434 (582) | 3200 | 135 (298) |
| MG-5082 A | PX-11040-B | 1, 2 | 1.06, 1.33, 1.53, 1.77, 2.05, 2.53 2.88 | 432 (579) 400 (536) | 460 (617) 418 (560) | 487 (653) 434 (582) | 3200 | 135 (298) |
| MGX-5086 SC | PX-12600 | 1, 2 | 1.06, 1.33, 1.53, 1.77, 2.05, 2.53 2.88 | 432 (579) 400 (536) | 460 (617) 418 (560) | 487 (653) 434 (582) | 3200 | 135 (298) |
| MGX-5086 A | PX-12290 | 1, 2 | 1.06, 1.33, 1.53, 1.77, 2.05, 2.53 2.88 | 432 (579) 400 (536) | 460 (617) 418 (560) | 487 (653) 434 (582) | 3200 | 135 (298) |
| MG-5091 SC | PX-10016 | 1, 2 | 1.17, 1.45, 1.71, 2.04 2.45 2.95 | 429 (575) 404 (542) 382 (512) | 471 (632) 442 (593) 418 (561) | 495 (664) 467 (626) 439 (589) | 3000 | 220 (485) |
| MG-5090 A | PX-10015 | 1, 2 | 1.45, 1.73, 1.96 2.43 | 429 (575) 404 (542) | 471 (632) 442 (593) | 494 (662) 434 (626) | 3000 | 216 (475) |
| MGX-5095 SC | PX-12480 | 1, 2 | 1.15, 1.27, 1.47, 1.71, 2.00, 2.46 2.95 | 525 (704) 481 (645) | 560 (751) 522 (700) | 593 (795) 554 (743) | 3000 | 190 (419) |
| MGX-5095 A | PX-12360 | 1, 2 | 1.28, 1.52, 1.81, 2.04 2.48 | 525 (704) 485 (650) | 560 (751) 522 (700) | 594 (797) 558 (748) | 3000 | 185 (407) |
| MGX-5095 RV | PX-12550 | — | 1.28, 1.52, 1.81, 2.04 2.48 | 525 (704) 485 (650) | 560 (751) 522 (700) | 594 (797) 558 (748) | 3000 | 178 (392) |
| MG-5095 SC | PX-11535 | 1, 2 | 1.15, 1.27, 1.47, 1.71, 2.00, 2.46 2.95 | 525 (704) 481 (645) | 560 (751) 522 (700) | 593 (795) 554 (743) | 3000 | 190 (419) |
| MG-5095 A | PX-11495 | 1, 2 | 1.28, 1.52, 1.81, 2.04 2.48 | 525 (704) 485 (650) | 560 (751) 522 (700) | 594 (797) 558 (748) | 3000 | 185 (407) |
| MG-5095 RV | PX-11600 | — | 1.28, 1.52, 1.81, 2.04 2.48 | 525 (704) 485 (650) | 560 (751) 522 (700) | 594 (797) 558 (748) | 3000 | 178 (392) |
| MGX-5114 SC | PX-12490 | 1 | 0.93, 1.02, 1.12, 1.50, 1.74 2.04, 2.54 3.00 | 579 (776) 579 (776) 494 (662) | 629 (843) 629 (843) 540 (724) | 669 (897) 669 (897) 588 (789) | 2800 at .93:1 3000 for others | 203 (447) |
| MGX-5114 SC-HD | PX-12860 | 1 | 1.50, 1.74, 2.04, 2.54 3.00 | 579 (776) 494 (662) | 629 (843) 540 (724) | 669 (897) 588 (789) | 3000 | 270 (595) |
| MGX-5114 DC | PX-12170 | 1 | 3.28, 3.43, 4.17 4.59 4.86 | 580 (777) 541 (725) 530 (711) | 629 (843) 629 (843) 540 (724) | 655 (878) 634 (850) 576 (772) | 3000 | 360 (793) |
| MGX-5114 A | 1024390 | 1, 2 | 1.03, 1.20, 1.48, 1.75, 1.92 2.04, 2.50 | 580 (777) | 629 (843) | 655 (878) | 3000 | 206 (455) |
| MGX-5114 RV | PX-11850 | — | 1.03, 1.20, 1.48, 1.75, 1.92 2.04, 2.50 | 580 (777) | 629 (843) | 655 (878) | 3000 | 198 (435) |
| MGX-5114 IV | PX-12510 | 1, 2 | 1.05, 1.23, 1.52, 1.80, 1.97 2.57 | 580 (777) 560 (751) | 629 (843) 607 (814) | 655 (878) 632 (848) | 3000 | 270 (595) |
| MG-5114 SC | PX-9785-B | 1 | 0.93, 1.02, 1.12, 1.50, 1.74, 2.04, 2.54 3.00 | 579 (776) 494 (662) | 629 (843) 540 (724) | 669 (897) 588 (789) | 2800 at .93:1 3000 for others | 203 (447) |
| MG-5114 DC | PX-10250-A PX-12195(FS) | 1 Ind. | 3.28, 3.43, 4.17 4.59 4.86 | 579 (776) 542 (727) 530 (711) | 629 (843) 591 (793) 565 (758) | 656 (880) 634 (850) 575 (771) | 3000 | 368 (810) |
| MG-5114 A | PX-11915 | 1, 2 | 1.03, 1.20, 1.48, 1.75, 1.92 2.04, 2.50 | 580 (777) | 629 (843) | 656 (880) | 3000 | 206 (455) |
| MG-5114 RV | PX-9830-A | — | 1.03, 1.20, 1.48, 1.75, 1.92 2.04, 2.50 | 580 (777) | 629 (843) | 656 (880) | 3000 | 198 (435) |
| MG-5114 IV | PX-11920 | 1, 2 | 1.05, 1.23, 1.52, 1.80, 1.97 2.57 | 580 (777) 560 (751) | 629 (843) 607 (814) | 656 (880) 632 (848) | 3000 | 270 (595) |

Important – See rating definitions, application information, and torsional compatibility notices on pages 1 and 2.
Ratings shown are in SAE Horsepower (HP). Metric Horsepower equals SAE times 1.014.
Weights are approximate and include flywheel housing adapter and flexible input coupling.



LIGHT DUTY RATINGS FOR STANDARD & QUICKSHIFT® MARINE TRANSMISSIONS (Continued)



| Model | Drawing Number | SAE Housing | Ratios | KILOWATTS (HORSEPOWER) | | | Maximum Speed (rpm) | Dry Weight (kg (lb)) |
|--------------------|----------------|--------------|--|--|---|--|---------------------|----------------------|
| | | | | @ 2100 RPM | @ 2300 RPM | @ 2500 RPM | | |
| MGX-5135 SC | PX-12450 | 1, 0 | 1.10, 1.28, 1.48, 1.73, 2.04 2.57 2.90 | 704 (944) 663 (889) 622 (834) | 746 (1000) 716 (960) 671 (900) | 788 (1057) 768 (1030) 720 (966) | 2800 | 300 (661) |
| MGX-5135 A | PX-12380 | 1, 0 | 1.16, 1.25, 1.53, 1.79, 2.00 2.52 | 704 (944) 663 (889) | 746 (1000) 716 (960) | 788 (1057) 768 (1030) | 2800 | 280 (617) |
| MGX-5135 RV | PX-12520 | — | 1.16, 1.25, 1.53, 1.79, 2.00 2.52 | 704 (944) 663 (889) | 746 (1000) 716 (960) | 788 (1057) 768 (1030) | 2800 | 258 (568) |
| MG-5135 SC | PX-11590 | 1, 0 | 1.10, 1.28, 1.48, 1.73, 2.04 2.57 2.90 | 704 (944) 663 (889) 622 (834) | 746 (1000) 716 (960) 671 (900) | 788 (1057) 768 (1030) 720 (966) | 2800 | 300 (661) |
| MG-5135 A | PX-11380 | 1, 0 | 1.16, 1.25, 1.53, 1.79, 2.00 2.52 | 704 (944) 663 (889) | 746 (1000) 716 (960) | 788 (1057) 768 (1030) | 2800 | 280 (617) |
| MG-5135 RV | PX-11945 | — | 1.16, 1.25, 1.53, 1.79, 2.00 2.52 | 704 (944) 663 (889) | 746 (1000) 716 (960) | 788 (1057) 768 (1030) | 2800 | 258 (568) |
| MGX-5145 SC | PX-12460 | 1, 0 | 1.03, 1.20, 1.33, 1.48, 1.75, 1.96 2.50 | 808 (1084) 759 (1018) | 857 (1150) 820 (1100) | 906 (1215) 881 (1181) | 2500 | 325 (716) |
| MGX-5145 A | PX-12420 | 1, 0 | 1.26, 1.48, 1.75, 1.96 2.50 | 808 (1084) 759 (1018) | 857 (1150) 820 (1100) | 906 (1215) 881 (1181) | 2500 | 333 (734) |
| MGX-5145 RV | PX-12530 | — | 1.26, 1.48, 1.75, 1.96 2.50 | 808 (1084) 759 (1018) | 857 (1150) 820 (1100) | 906 (1215) 881 (1181) | 2500 | 295 (650) |
| MG-5145 SC | PX-10885 | 1, 0 | 1.03, 1.20, 1.33, 1.48, 1.75, 1.96 2.50 | 808 (1084) 759 (1018) | 857 (1150) 820 (1100) | 906 (1215) 881 (1181) | 2500 | 325 (716) |
| MG-5145 A | PX-10830 | 1, 0 | 1.26, 1.48, 1.75, 1.96 2.50 | 808 (1084) 759 (1018) | 857 (1150) 820 (1100) | 906 (1215) 881 (1181) | 2500 | 333 (734) |
| MG-5145 RV | PX-10880 | — | 1.26, 1.48, 1.75, 1.96 2.50 | 808 (1084) 759 (1018) | 857 (1150) 820 (1100) | 906 (1215) 881 (1181) | 2500 | 295 (650) |
| MGX-5147 SC | PX-12470-A | 1, 0 | 1.20, 1.33, 1.48, 1.57, 1.75, 1.96 2.50 | 918 (1231) 828 (1110) | 974 (1306) 895 (1200) | 1028 (1379) 961 (1289) | 2500 | 325 (716) |
| MGX-5147 A | PX-12430-A | 1, 0 | 1.26, 1.48, 1.75, 1.96 2.50 | 918 (1231) 828 (1110) | 974 (1306) 895 (1200) | 1028 (1379) 961 (1289) | 2500 | 333 (734) |
| MGX-5147 RV | PX-12540-A | — | 1.26, 1.48, 1.75, 1.96 2.50 | 918 (1231) 828 (1110) | 974 (1306) 895 (1200) | 1028 (1379) 961 (1289) | 2500 | 295 (650) |
| | | | | @ 1800 RPM | @ 2100 RPM | @ 2300 RPM | | |
| MG-5202 SC | 1016103-C | 1, 0 Ind. | 1.17, 1.33, 1.53, 1.76, 2.03, 2.48, 2.92 3.48 | 742 (995) 641 (860) | 852 (1142) 731 (980) | 924 (1239) 789 (1059) | 2750 | 587 (1292) |
| MG-5203 SC | 1016249-A | 1, 0 Ind. | 1.17, 1.33, 1.53, 1.76, 2.03, 2.48, 2.92 3.48 | 742 (995) 641 (860) | 852 (1142) 731 (980) | 924 (1239) 789 (1059) | 2750 | 409 (900) |
| MG-5204 SC | 1016250-B | 1, 0 Ind. | 1.17, 1.33, 1.53, 1.76, 2.03, 2.48, 2.92 3.48 | 742 (995) 647 (868) | 865 (1160) 764 (1025) | 979 (1313) 837 (1122) | 2750 | 409 (900) |
| MG-6449 A | 7-37423 | 1, 0 Ind. | 1.51, 1.73 2.07 2.44 2.95 | 840 (1126) 795 (1067) 711 (953) 545 (731) | 978 (1312) 912 (1223) 805 (1080) 635 (852) | 1072 (1437) 974 (1306) 861 (1154) 696 (933) | 2500 | 344 (757) |
| MG-6449 RV | 7-37431-A | — | 1.51, 1.73 2.07 2.44 2.95 | 840 (1126) 795 (1067) 711 (953) 545 (731) | 978 (1312) 912 (1223) 805 (1080) 635 (852) | 1072 (1437) 974 (1306) 861 (1154) 696 (933) | 2500 | 325 (716) |
| MGX-6598 DC | 7-40379 | 1, 0 Ind. | 2.46, 3.03 3.48 3.93 4.43 | 1000 (1341) 1000 (1341) 952 (1277) 862 (1156) | 1167 (1565) 1155 (1549) 1060 (1421) 990 (1328) | 1278 (1714) 1241 (1664) 1131 (1517) 1055 (1415) | 2500 | 580 (1278) |
| MGX-6599 SC | 7-40384 | 1, 0 Ind. | 1.07, 1.30, 1.50, 1.66, 1.74 1.97, 2.04, 2.19 2.45 2.82 | 1010 (1354) 1001 (1342) 920 (1234) 821 (1101) | 1178 (1580) 1167 (1565) 1073 (1439) 955 (1281) | 1244 (1668) 1234 (1655) 1164 (1561) 1042 (1397) | 2500 | 492 (1084) |

Important – See rating definitions, application information, and torsional compatibility notices on pages 1 and 2.
 Ratings shown are in SAE Horsepower (HP). Metric Horsepower equals SAE times 1.014.
 Weights are approximate and include flywheel housing adapter and flexible input coupling.



LIGHT DUTY RATINGS FOR STANDARD & QUICKSHIFT® MARINE TRANSMISSIONS (Continued)



| Model | Drawing Number | SAE Housing | Ratios | KILOWATTS (HORSEPOWER) | | | Maximum Speed (rpm) | Dry Weight (kg (lb)) |
|--------------------|---------------------------------|-----------------|--|--|--|--|--------------------------------------|----------------------|
| | | | | @ 1800 RPM | @ 2100 RPM | @ 2300 RPM | | |
| MGX-6599 A | 7-40263 | 1, 0 Ind. | 1.34, 1.51, 1.74, 2.03, 2.24 2.48 2.80 | 1092 (1464) 935 (1254) 896 (1202) | 1221 (1637) 1091 (1463) 1045 (1401) | 1301 (1745) 1195 (1602) 1144 (1534) | 2500 | 488 (1075) |
| MGX-6599 RV | 7-40336 | — | 1.34, 1.51, 1.74, 2.03, 2.24 2.48 2.80 | 1092 (1464) 935 (1254) 896 (1202) | 1221 (1637) 1091 (1463) 1045 (1401) | 1301 (1745) 1195 (1602) 1144 (1534) | 2500 | 468 (1031) |
| MG-6600 DC | 7-36712-A | 0 Ind. | 3.30, 4.11 4.68, 4.72 5.22 6.05 | 1009 (1353) 926 (1242) 818 (1097) 722 (968) | 1177 (1578) 1080 (1448) 953 (1278) 843 (1129) | 1289 (1728) 1182 (1585) 1044 (1400) 923 (1237) | 2500 | 794 (1747) |
| MGX-6620 SC | 7-40337 | 0 Ind. | 1.15 1.33, 1.53, 1.73, 2.03 2.32, 2.44 2.72 | 1109 (1487) 1109 (1487) 1109 (1487) 1080 (1448) | 1294 (1735) 1294 (1735) 1294 (1735) 1255 (1683) | 1338 (1794) 1417 (1900) 1417 (1900) 1338 (1794) | 2500 | 575 (1267) |
| MGX-6620 A | 7-40264 | 0 Ind. | 1.55, 1.72, 2.09, 2.28, 2.42 2.73 | 1106 (1483) 1105 (1482) | 1294 (1735) 1248 (1674) | 1417 (1900) 1330 (1784) | 2500 | 580 (1278) |
| MGX-6620 RV | 7-40316 | — | 1.55, 1.72, 2.09, 2.28, 2.42 2.73 | 1106 (1483) 1105 (1482) | 1294 (1735) 1248 (1674) | 1417 (1900) 1330 (1784) | 2500 | 510 (1123) |
| MGX-6650 SC | 1002046 | 0, 00 Ind. | 1.51, 1.88, 2.03, 2.37 2.47, 2.93, 3.21 | 1225 (1643) | 1417 (1900) | 1464 (1963) | 2300 (1.51-2.37) 2500 (2.47-3.21) | 1001 (2205) |
| MGX-6690 SC | 1020674 | 0, 00 Ind. | 1.51, 1.88, 2.03, 2.37 2.47, 2.93, 3.21 | 1225 (1643) | 1417 (1900) | 1464 (1963) | 2300 (1.51-2.37) 2500 (2.47-3.21) | 1001 (2205) |
| MGX-6848 SC | 1020675 | 0, 00 Ind. | 1.51, 1.88, 2.03, 2.47 2.58, 2.93 3.21 | 1591 (2134) 1483 (1989) 1297 (1739) | 1828 (2451) 1699 (2278) 1485 (1991) | 1985 (2662) 1841 (2469) 1609 (2158) | 2300 (1.51-2.03) 2500 (2.47-3.21) | 1001 (2205) |
| | | | | @ 1600 RPM | @ 1800 RPM | @ 2100 RPM | | |
| MG-6984 SC | 7-37008 7-37481 P-71034-B | Ind. 0 00 | 1.18, 1.54, 2.06, 2.29, 2.52 2.92 3.25 3.43 | 1614 (2164) 1528 (2049) 1269 (1702) 1180 (1582) | 1816 (2435) 1719 (2305) 1427 (1914) 1328 (1781) | 2119 (2842) 2006 (2690) 1665 (2233) 1549 (2077) | 2100 | 1192 (2628) |
| MG-6984 A | 7-37028 P-71093 P-71094 | Ind. 0 00 | 1.48, 1.97 2.50 2.79 2.93 | 1602 (2148) 1552 (2081) 1536 (2060) 1512 (2028) | 1802 (2416) 1746 (2341) 1728 (2317) 1701 (2281) | 2102 (2819) 2037 (2732) 2016 (2703) 1984 (2661) | 2100 | 909 (2000) |
| MG-6984 RV | 7-37042 | — | 1.48, 1.97 2.50 2.79 2.93 | 1602 (2148) 1552 (2081) 1536 (2060) 1512 (2028) | 1802 (2416) 1746 (2341) 1728 (2317) 1701 (2281) | 2102 (2819) 2037 (2732) 2016 (2703) 1984 (2661) | 2100 | 909 (2000) |
| MG-61242 SC | 7-37017 | Ind. | 1.16, 1.52, 2.08 2.47 2.96 | 2064 (2768) 2207 (2691) 1950 (2615) | 2322 (3114) 2258 (3028) 2193 (2941) | 2709 (3633) 2634 (3532) 2559 (3432) | 2100 | 1050 (2310) |
| MG-61242 A | 7-37046 | Ind. | 1.42, 2.07 2.44 2.93 | 2090 (2803) 2207 (2691) 1950 (2615) | 2351 (3153) 2258 (3028) 2193 (2941) | 2743 (3678) 2634 (3532) 2559 (3432) | 2100 | 1105 (2431) |
| MG-61242 RV | 7-37049 | — | 1.42, 2.07 2.44 2.93 | 2090 (2803) 2207 (2691) 1950 (2615) | 2351 (3153) 2258 (3028) 2193 (2941) | 2743 (3678) 2634 (3532) 2559 (3432) | 2100 | 1105 (2431) |

Important – See rating definitions, application information, and torsional compatibility notices on pages 1 and 2.
Ratings shown are in SAE Horsepower (HP). Metric Horsepower equals SAE times 1.014.
Weights are approximate and include flywheel housing adapter and flexible input coupling.

Consult Twin Disc on light duty ratings for models MG-514C SC/DC, MGX-516 DC, MGX-5170 DC, MG-520-1HP, MGX-5222 DC, MGX-5225 DC, MGX-5321, MG-540, MGX-5600 and other deep ratio units not listed.



| Model | Drawing Number | SAE Housing | Ratios | KILOWATTS (HORSEPOWER) | | | Maximum Speed (rpm) | Dry Weight kg (lb) |
|--------------------|----------------------|------------------------|--|--|---|--|---------------------|------------------------|
| | | | | @ 2100 RPM | @ 2500 RPM | @ 2800 RPM | | |
| MG-340 | IT101317501 | 5, BW | 1.45 2.00 2.60 | 24 (32) 17 (23) 13 (17) | 26 (35) 20 (27) 15 (20) | 26 (35) 23 (31) 18 (24) | 4500 | 9 (20) |
| MG-360 | IT101318505 | 5, BW | 1.55 2.00 2.45 2.83 | 31 (42) 28 (38) 23 (31) 19 (26) | 36 (48) 33 (44) 29 (39) 22 (30) | 41 (55) 37 (50) 31 (42) 25 (34) | 5000 | 14 (31) |
| MG-5005 A | IT345ATD0001 | 3, 4, 5 | 1.54, 2.00 2.47 | 47 (63) 35 (47) | 56 (75) 41 (55) | 63 (85) 47 (63) | 4500 | 25 (55) |
| MG-5012 SC | IT1013079B01 | 3, 4, BW | 1.52 2.09 2.40 2.78 | 93 (124) 81 (108) 72 (96) 62 (84) | 110 (148) 96 (129) 85 (115) 74 (100) | 124 (166) 108 (144) 96 (128) 83 (111) | 4500 | 53 (117) |
| MG-5020 SC | IT1013049B01 | 3, 4, BW | 1.50, 2.04 2.50 2.94 | 134 (179) 107 (144) 93 (124) | 159 (214) 128 (171) 110 (148) | 178 (239) 143 (192) 124 (166) | 4000 | 75 (165) |
| MG-5025 A | IT1013170 | 3, 4, BW | 1.52, 2.09 2.40 | 81 (109) 69 (93) | 97 (130) 82 (110) | 108 (145) 92 (123) | 4500 | 36 (79) |
| MG-5055 A | IT101316101 | 3, 4, BW | 1.53, 2.08 2.60 | 147 (197) 99 (135) | 175 (235) 118 (160) | 196 (263) 132 (179) | 4000 | 54 (119) |
| MG-5010 DC | PX-9400 | 3, 4, BW | 3.00 3.52 4.00 | 87 (117) 77 (103) 67 (90) | 104 (140) 92 (123) 80 (107) | 112 (150) 103 (138) 89 (120) | 4000 | 75 (165) |
| MG-5011 SC | PX-10270 | 3, 4, BW | 1.11, 1.27, 1.50, 2.00 2.44 | 112 (150) 92 (124) | 123 (165) 112 (150) | 127 (170) 119 (160) | 4400 | 49 (109) |
| MG-5011 A | PX-9999 | 3, 4, BW | 1.44, 1.90 2.39 | 112 (150) 103 (138) | 123 (165) 112 (150) | 127 (170) 123 (165) | 4400 | 49 (109) |
| MG-5011 IV | PX-10290 | 3, 4, BW | 1.14, 1.54, 2.06 2.51 | 112 (150) 92 (124) | 123 (165) 112 (150) | 127 (170) 119 (160) | 4400 | 77 (170) |
| MG-5050 SC | PX-12700 | 1, 2, 3, 4 SPEC. #3 | 1.00, 1.23, 1.53, 1.71, 2.04, 2.45 3.00 | 157 (211) 142 (190) | 187 (251) 170 (228) | 209 (280) 194 (260) | 3300 | 86 (189) |
| MG-5050 A | PX-12730 | 1, 2, 3, 4 SPEC. #3 | 1.12, 1.26, 1.50, 1.80, 2.04, 2.50 | 157 (211) | 187 (251) | 209 (280) | 3300 | 80 (176) |
| MG-5050 RV | PX-8760 | — | 1.12, 1.26, 1.50, 1.80, 2.04, 2.50 | 157 (211) | 187 (251) | 209 (280) | 3300 | 73 (160) |
| MG-506-1 | XA7022-A XA7048-A | 1, 2, 3 1, 2, 3 | 1.09, 1.50, 1.97 2.50, 2.96 | 121 (162) 121 (162) | 144 (193) 144 (193) | 160 (215) 160 (215) | 3000 3000 | 100 (220) 102 (224) |
| MG-5061 SC | PX-11650/-A | 1, 2, 3 SPEC. #3 | 1.15, 1.48, 1.77, 2.00, 2.43, 3.00 | 201 (270) | 239 (320) | 261 (350) | 3300 | 98 (215) |
| MG-5061 A | PX-11640/-A | 1, 2, 3 SPEC. #3 | 1.13, 1.28, 1.54, 1.75, 2.00, 2.47 | 201 (270) | 239 (320) | 261 (350) | 3300 | 95 (210) |
| MG-5061 V | PX-8735 | — | 1.13, 1.28, 1.54, 1.75, 2.00, 2.47 | 201 (270) | 239 (320) | 261 (350) | 3300 | 95 (210) |
| MG-5062 V | PX-11660/-A | 1, 2, 3 SPEC. #3 | 1.19, 1.53, 1.83, 2.07, 2.51 | 201 (270) | 239 (320) | 261 (350) | 3300 | 142 (312) |
| MGX-5065 SC | PX-12410 | 1, 2, 3 SPEC. #3 | 1.08, 1.26, 1.47, 1.72, 2.04 2.43 | 279 (374) 254 (341) | 329 (441) 302 (405) | 367 (492) 338 (453) | 3300 | 111 (244) |
| MGX-5065 A | PX-12370 | 1, 2, 3 SPEC. #3 | 1.08, 1.26, 1.47, 1.72, 2.04 2.43 | 279 (374) 254 (341) | 329 (441) 302 (405) | 367 (492) 338 (453) | 3300 | 111 (244) |
| MG-5065 SC | PX-11480 | 1, 2, 3 SPEC. #3 | 1.08, 1.26, 1.47, 1.72, 2.04 2.43 | 279 (374) 254 (341) | 329 (441) 302 (405) | 367 (492) 338 (453) | 3300 | 111 (244) |
| MG-5065 A | PX-11165 | 1, 2, 3 SPEC. #3 | 1.08, 1.26, 1.47, 1.72, 2.04 2.43 | 279 (374) 254 (341) | 329 (441) 302 (405) | 367 (492) 338 (453) | 3300 | 111 (244) |

Important – See rating definitions, application information, and torsional compatibility notices on pages 1 and 2.
Ratings shown are in SAE Horsepower (HP). Metric Horsepower equals SAE times 1.014.
Weights are approximate and include flywheel housing adapter and flexible input coupling.



INTERMEDIATE DUTY RATINGS FOR STANDARD & QUICKSHIFT® MARINE TRANSMISSIONS (Continued)



| Model | Drawing Number | SAE Housing | Ratios | KILOWATTS (HORSEPOWER) | | | Maximum Speed (rpm) | Dry Weight (kg (lb)) |
|--------------------|----------------|---------------------|--|--|--|--|---------------------|----------------------|
| | | | | @ 2100 RPM | @ 2500 RPM | @ 2800 RPM | | |
| MGX-5075 SC | PX-12620 | 1, 2, 3 SPEC. #3 | 1.06, 1.22, 1.33, 1.53, 1.77, 2.05 2.53 2.88 | 283 (380) 268 (360) 261 (350) | 310 (416) 298 (400) 287 (385) | 324 (434) 313 (420) 306 (410) | 3500 | 122 (268) |
| MGX-5075 A | PX-12610 | 1, 2, 3 SPEC. #3 | 1.06, 1.22, 1.33, 1.53, 1.77, 2.05 2.53 2.88 | 283 (380) 268 (360) 261 (350) | 310 (416) 298 (400) 287 (385) | 324 (434) 313 (420) 306 (410) | 3500 | 122 (268) |
| MGX-5075 IV | PX-12630 | 1, 2, 3 SPEC. #3 | 1.03, 1.30, 1.49, 1.72, 1.99, 2.46 | 268 (360) | 298 (400) | 313 (420) | 3500 | 150 (330) |
| MG-5075 SC | PX-11876 | 1, 2, 3 SPEC. #3 | 0.80, 0.92, 1.01, 1.16 | 268 (360) | 298 (400) | 313 (420) | 3000 | 122 (268) |
| MG-5075 SC | PX-10680/-A | 1, 2, 3 SPEC. #3 | 1.06, 1.22, 1.33, 1.53, 1.77, 2.05 2.53 2.88 | 283 (380) 268 (360) 261 (350) | 310 (416) 298 (400) 287 (385) | 324 (434) 313 (420) 306 (410) | 3500 | 122 (268) |
| MG-5075 A | PX-10700/-A | 1, 2, 3 SPEC. #3 | 1.06, 1.22, 1.33, 1.53, 1.77, 2.05 2.53 2.88 | 283 (380) 268 (360) 261 (350) | 310 (416) 298 (400) 287 (385) | 324 (434) 313 (420) 306 (410) | 3500 | 122 (268) |
| MG-5075 IV | PX-11530 | 1, 2, 3 SPEC. #3 | 1.03, 1.30, 1.49, 1.72, 1.99, 2.46 | 268 (360) | 298 (400) | 313 (420) | 3500 | 150 (330) |
| MG-509 | X-9816-F | 1, 2 | 1.45, 2.00 2.48 2.95 3.39 | 235 (315) 235 (315) 216 (290) 165 (220) | 273 (366)* 273 (366)* 244 (327)* 190 (255)* | 300 (400)* 300 (400)* 265 (355)* 210 (280)* | 3000* | 259 (572) |
| | X-9835 | 1, 2 | 3.83, 4.50 4.95 | 235 (315) 180 (242) | 279 (374)* 213 (285)* | 311 (417)* 235 (315)* | 3000* | 323 (712) |
| MG-5085 SC | PX-9260-B/-C | 1, 2, 3 SPEC. #3 | 1.05, 1.22, 1.42, 1.76, 1.96 2.33 | 287 (385) 268 (360) | 332 (445) 302 (405) | 365 (490) 328 (440) | 3200 | 120 (265) |
| MG-5085 A | PX-9360-B/-C | 1, 2, 3 SPEC. #3 | 1.05, 1.22, 1.47, 1.72, 2.04 2.43 | 287 (385) 268 (360) | 332 (445) 302 (405) | 365 (490) 328 (440) | 3200 | 123 (270) |
| MG-5082 SC | PX-11250-A | 1, 2 | 1.06, 1.33, 1.53, 1.77, 2.05, 2.53 2.88 | 351 (471) 340 (456) | 396 (531) 384 (515) | 428 (574) 415 (557) | 3200 | 135 (298) |
| MG-5082 A | PX-11040-B | 1, 2 | 1.06, 1.33, 1.53, 1.77, 2.05, 2.53 2.88 | 351 (471) 340 (456) | 396 (531) 384 (515) | 428 (574) 415 (557) | 3200 | 135 (298) |
| MGX-5086 SC | PX-12600 | 1, 2 | 1.06, 1.33, 1.53, 1.77, 2.05, 2.53 2.88 | 351 (471) 340 (456) | 396 (531) 384 (515) | 428 (574) 415 (557) | 3200 | 135 (298) |
| MGX-5086 A | PX-12290 | 1, 2 | 1.06, 1.33, 1.53, 1.77, 2.05, 2.53 2.88 | 351 (471) 340 (456) | 396 (531) 384 (515) | 428 (574) 415 (557) | 3200 | 135 (298) |
| MG-5091 SC | PX-10016 | 1 | 1.17, 1.45, 1.71, 2.04 2.45, 2.95 3.33 | 354 (475) 336 (450) 268 (360) | 403 (540) 374 (501) 309 (415) | 425 (570) 403 (540) 346 (464) | 3000 | 220 (485) |
| MG-5091 DC | 1002155 | 1 | 3.82 4.50 5.05 | 321 (431) 298 (400) 251 (336) | 377 (506) 350 (470) 298 (400) | 420 (563) 384 (515) 334 (448) | 3000 | 297 (655) |
| MG-5090 A | PX-10015 | 1, 2 | 1.45, 1.73, 1.96 2.43 | 343 (460) 321 (430) | 365 (490) 343 (460) | 382 (512) 359 (481) | 3000 | 216 (475) |
| | | | | @ 1800 RPM | @ 2100 RPM | @ 2300 RPM | | |
| MGX-5095 SC | PX-12480 | 1, 2 | 1.15, 1.27, 1.47, 1.71, 2.00, 2.46 2.95 | 368 (493) 332 (445) | 410 (550) 380 (510) | 438 (587) 412 (552) | 3000 | 190 (419) |
| MGX-5095 A | PX-12360 | 1, 2 | 1.28, 1.52, 1.81, 2.04 2.48 | 367 (492) 336 (451) | 410 (550) 380 (510) | 438 (587) 409 (548) | 3000 | 185 (407) |
| MGX-5095 RV | PX-12550 | — | 1.28, 1.52, 1.81, 2.04 2.48 | 367 (492) 336 (451) | 410 (550) 380 (510) | 438 (587) 409 (548) | 3000 | 178 (392) |

Important – See rating definitions, application information, and torsional compatibility notices on pages 1 and 2.
Ratings shown are in SAE Horsepower (HP). Metric Horsepower equals SAE times 1.014.
Weights are approximate and include flywheel housing adapter and flexible input coupling.

* SAE-14" A6911 driving ring has a 2150 rpm maximum speed.



INTERMEDIATE DUTY RATINGS FOR STANDARD & QUICKSHIFT® MARINE TRANSMISSIONS (Continued)



| Model | Drawing Number | SAE Housing | Ratios | KILOWATTS (HORSEPOWER) | | | Maximum Speed (rpm) | Dry Weight kg (lb) |
|-----------------------|----------------------------|--------------------|--|---------------------------------------|---------------------------------------|---------------------------------------|----------------------------------|--------------------|
| | | | | @ 1800 RPM | @ 2100 RPM | @ 2300 RPM | | |
| MG-5095 SC | PX-11535 | 1, 2 | 1.15, 1.27, 1.47, 1.71, 2.00, 2.46 2.95 | 368 (493) 332 (445) | 410 (550) 380 (510) | 438 (587) 412 (552) | 3000 | 190 (419) |
| MG-5095 A | PX-11495 | 1, 2 | 1.28, 1.52, 1.81, 2.04 2.48 | 367 (492) 336 (451) | 410 (550) 380 (510) | 438 (587) 409 (548) | 3000 | 185 (407) |
| MG-5095 RV | PX-11600 | — | 1.28, 1.52, 1.81, 2.04 2.48 | 367 (492) 336 (451) | 410 (550) 380 (510) | 438 (587) 409 (548) | 3000 | 178 (392) |
| MGX-5114 SC | PX-12490 | 1 | 0.93, 1.02, 1.12, 1.50, 1.74, 2.04 2.54 3.00 | 448 (601) 410 (550) 380 (510) | 504 (676) 466 (625) 451 (605) | 552 (740) 500 (671) 492 (660) | 2800 at .93:1 3000 for others | 203 (447) |
| MGX-5114 SC-HD | PX-12860 | 1 | 1.50, 1.74, 2.04 2.54 3.00 | 448 (601) 410 (550) 380 (510) | 504 (676) 466 (625) 451 (605) | 552 (740) 500 (671) 492 (660) | 3000 | 270 (595) |
| MGX-5114 DC | PX-12170 | 1 | 3.28, 3.43, 4.17 4.59 4.86 | 431 (580) 388 (520) 375 (503) | 504 (676) 448 (601) 429 (575) | 537 (720) 477 (640) 463 (621) | 3000 | 360 (793) |
| MGX-5114 A | 1024390 | 1, 2 | 1.03, 1.20, 1.48, 1.75, 1.92, 2.04 2.50 | 404 (542) 351 (471) | 466 (625) 400 (536) | 504 (676) 433 (581) | 3000 | 206 (455) |
| MGX-5114 RV | PX-11850 | — | 1.03, 1.20, 1.48, 1.75, 1.92, 2.04 2.50 | 404 (542) 351 (471) | 466 (625) 400 (536) | 504 (676) 433 (581) | 3000 | 198 (435) |
| MGX-5114 IV | PX-12510 | 1, 2 | 1.05, 1.23, 1.52, 1.80, 1.97 2.57 | 404 (542) 351 (471) | 466 (625) 400 (536) | 504 (676) 433 (581) | 3000 | 270 (595) |
| MG-5114 SC | PX-9785-B | 1 | 0.93, 1.02, 1.12, 1.50, 1.74, 2.04 2.54 3.00 | 448 (601) 410 (550) 380 (510) | 504 (676) 466 (625) 451 (605) | 552 (740) 507 (680) 492 (660) | 2800 at .93:1 3000 for others | 203 (447) |
| MG-5114 SC-HD | PX-11962 | 1 | 1.50, 1.74, 2.04 2.54 3.00 | 448 (601) 410 (550) 380 (510) | 504 (676) 466 (625) 451 (605) | 552 (740) 507 (680) 492 (660) | 3000 | 270 (595) |
| MG-5114 DC | PX-10250-A PX-12195(FS) | 1 Ind. | 3.28, 3.43, 4.17 4.59 4.86 | 431 (578) 388 (520) 375 (503) | 504 (676) 448 (601) 429 (575) | 537 (720) 477 (640) 463 (621) | 3000 | 368 (810) |
| MG-5114 A | PX-11915 | 1, 2 | 1.03, 1.20, 1.48, 1.75, 1.92, 2.04 2.50 | 404 (542) 351 (471) | 466 (625) 400 (536) | 504 (676) 433 (581) | 3000 | 206 (455) |
| MG-5114 RV | PX-9830-A | — | 1.03, 1.20, 1.48, 1.75, 1.92, 2.04 2.50 | 404 (542) 351 (471) | 466 (625) 400 (536) | 504 (676) 433 (581) | 3000 | 198 (435) |
| MG-5114 IV | PX-11920 | 1, 2 | 1.05, 1.23, 1.52, 1.80, 1.97 2.57 | 404 (542) 351 (471) | 466 (625) 400 (536) | 504 (676) 433 (581) | 3000 | 270 (595) |
| MGX-5135 SC | PX-12450 | 1, 0 | 1.10, 1.28, 1.48, 1.73, 2.04, 2.57 2.90 | 529 (709) 493 (661) | 560 (751) 522 (700) | 600 (805) 560 (751) | 2800 | 300 (661) |
| MGX-5135 A | PX-12380 | 1, 0 | 1.16, 1.25, 1.53, 1.79, 2.00, 2.52 | 529 (709) | 560 (751) | 600 (805) | 2800 | 280 (617) |
| MGX-5135 RV | PX-12520 | — | 1.16, 1.25, 1.53, 1.79, 2.00, 2.52 | 529 (709) | 560 (751) | 600 (805) | 2800 | 258 (568) |
| MG-5135 SC | PX-11590 | 1, 0 | 1.10, 1.28, 1.48, 1.73, 2.04, 2.57 2.90 | 529 (709) 493 (661) | 560 (751) 522 (700) | 600 (805) 560 (751) | 2800 | 300 (661) |
| MG-5135 A | PX-11380 | 1, 0 | 1.16, 1.25, 1.53, 1.79, 2.00, 2.52 | 529 (709) | 560 (751) | 600 (805) | 2800 | 280 (617) |
| MG-5135 RV | PX-11945 | — | 1.16, 1.25, 1.53, 1.79, 2.00, 2.52 | 529 (709) | 560 (751) | 600 (805) | 2800 | 258 (568) |
| MG-514C SC | X-9784-C | 1, 0 (14" only) | 1.51, 2.00, 2.50, 3.00 3.50 | 326 (437) 288 (386) | 380 (510) 336 (450) | 418 (560) 365 (490) | 2500 | 524 (1155) |
| MG-514C DC | X-9786-C | 1, 0 (14" only) | 4.13, 4.50, 5.16 6.00 | F326 (437) R307 (412) 283 (380) | F380 (510) R358 (480) 330 (442) | F418 (560) R378 (507) 359 (481) | 2500 | 658 (1450) |

Important – See rating definitions, application information, and torsional compatibility notices on pages 1 and 2.
Ratings shown are in SAE Horsepower (HP). Metric Horsepower equals SAE times 1.014.
Weights are approximate and include flywheel housing adapter and flexible input coupling.



INTERMEDIATE DUTY RATINGS FOR STANDARD & QUICKSHIFT® MARINE TRANSMISSIONS (Continued)



| Model | Drawing Number | SAE Housing | Ratios | KILOWATTS (HORSEPOWER) | | | Maximum Speed (rpm) | Dry Weight (kg (lb)) |
|---|-----------------------|---------------|--|--|--|--|--|----------------------|
| | | | | @ 1800 RPM | @ 2100 RPM | @ 2300 RPM | | |
| MGX-5145 SC | PX-12460 | 1, 0 | 1.03, 1.20, 1.33, 1.48, 1.75, 1.96 2.50 | 698 (936) 587 (787) | 746 (1000) 671 (900) | 836 (1121) 726 (974) | 2500 | 325 (716) |
| MGX-5145 A | PX-12420 | 1, 0 | 1.26, 1.48, 1.75, 1.96 2.50 | 698 (936) 587 (787) | 746 (1000) 671 (900) | 836 (1121) 726 (974) | 2500 | 333 (734) |
| MGX-5145 RV | PX-12530 | — | 1.26, 1.48, 1.75, 1.96 2.50 | 698 (936) 587 (787) | 746 (1000) 671 (900) | 836 (1121) 726 (974) | 2500 | 295 (650) |
| MG-5145 SC | PX-10885 | 1, 0 | 1.03, 1.20, 1.33, 1.48, 1.75, 1.96 2.50 | 698 (936) 587 (787) | 746 (1000) 671 (900) | 836 (1121) 726 (974) | 2500 | 325 (716) |
| MG-5145 A | PX-10830 | 1, 0 | 1.26, 1.48, 1.75, 1.96 2.50 | 698 (936) 587 (787) | 746 (1000) 671 (900) | 836 (1121) 726 (974) | 2500 | 333 (734) |
| MG-5145 RV | PX-10880 | — | 1.26, 1.48, 1.75, 1.96 2.50 | 698 (936) 587 (787) | 746 (1000) 671 (900) | 836 (1121) 726 (974) | 2500 | 295 (650) |
| MGX-5147 SC | PX-12470-A | 1, 0 | 1.20, 1.33, 1.48, 1.57, 1.75, 1.96 2.50 | 753 (1010) 615 (825) | 806 (1081) 702 (941) | 903 (1211) 760 (1019) | 2500 | 325 (716) |
| MGX-5147 A | PX-12430-A | 1, 0 | 1.26, 1.48, 1.75, 1.96 2.50 | 753 (1010) 615 (825) | 806 (1081) 702 (941) | 903 (1211) 760 (1019) | 2500 | 333 (734) |
| MGX-5147 RV | PX-12540-A | — | 1.03, 1.20, 1.33, 1.48, 1.75, 1.96 2.50 | 753 (1010) 615 (825) | 806 (1081) 702 (941) | 903 (1211) 760 (1019) | 2500 | 295 (650) |
| MGX-516 DC | 1023380 (14" only) | 1, 0 | 3.06 3.50 4.04 4.52 5.05 6.00 | 530 (711) 518 (695) 494 (662) 484 (649) 468 (628) 419 (562) | 573 (768) 549 (736) 521 (699) 510 (684) 492 (660) 470 (630) | 594 (797) 569 (763) 540 (724) 526 (705) 508 (681) 498 (668) | 2500 | 717 (1580) |
| MGX-5170 DC | 1023382 | 1, 0 | 3.12, 3.54, 4.06, 4.50, 5.03, 5.95 6.53, 6.95 | 537 (720) 467 (626) | 578 (775) 545 (731) | 578 (775) 561 (752) | 2500 | 850 (1872) |
| MG-520-1HP | XA-7255-B | 0 | 4.49, 5.00, 6.11 7.00 7.42 | 718 (963) 667 (894) 623 (835) | 837 (1122) 764 (1025) 714 (957) | 917 (1230) 828 (1110) 774 (1038) | 2500 | 1559 (3436) |
| MG-5202 SC | 1016103-C | 1, 0 Ind. | 1.17, 1.33, 1.53, 1.76, 2.03, 2.48, 2.92 3.48 | 630 (845) | 720 (966) | 778 (1043) | 2750 (2500 at 1.17:1) | 587 (1292) |
| MG-5203 SC | 1016249-A | 1, 0 Ind. | 1.17, 1.33, 1.53, 1.76, 2.03, 2.48, 2.92 3.48 | 630 (845) | 720 (966) | 778 (1043) | 2750 (2500 at 1.17:1) | 409 (900) |
| MG-5204 SC | 1016250-B | 1, 0 Ind. | 1.17, 1.33, 1.53, 1.76, 2.03, 2.48, 2.92 3.48 | 727 (975) 630 (845) | 858 (1151) 720 (966) | 969 (1299) 781 (1047) | 2750 (2500 at 1.17:1) | 409 (900) |
| MGX-5222 DC | 1022822-A | 1, 0 Ind. | 4.03, 4.59, 5.04, 6.10, 6.55, 6.96 | 630 (845) | 720 (966) | 778 (1043) | 2500 | 1046 (2304) |
| MGX-5225 DC | 1022825-A | 1, 0 Ind. | 4.03, 4.59, 5.04, 5.57, 6.10 | 727 (975) | 858 (1151) | 869 (1165) | 2500 | 1046 (2304) |
| MGX-5321 DC | 1022203-B | 0, 00 Ind. | 3.35, 4.06, 4.42, 4.96, 5.46, 5.96 6.39 | 1044 (1400) 893 (1198) | 1163 (1560) 1022 (1371) | 1178 (1580) 1108 (1486) | 2400 | 1754 (3864) |
| | | | | @ 1600 RPM | @ 1800 RPM | @ 2100 RPM | | |
| MG-540 (with rubber block drive) | X-9882-C | 0 00, Ind. | 1.93, 2.58, 2.90 3.26 3.91 4.10, 4.60 5.17 6.18 7.00 7.47 | 986 (1322) 902 (1210) 832 (1116) 986 (1322) 886 (1188) 832 (1116) 700 (939) 667 (894) | 1055 (1415)* 1005 (1348)* 931 (1248)* 1055 (1415)* 988 (1325)* 931 (1248)* 779 (1045)* 742 (995)* | — 1156 (1550)* 1040 (1395)* — 1119 (1501)* 1040 (1395)* 895 (1200)* 850 (1140)* | 1900* 2100* 2400* 1900* 2100* 2400* 2400* 2400* | 2105 (4640) |

Important – See rating definitions, application information, and torsional compatibility notices on pages 1 and 2.
Ratings shown are in SAE Horsepower (HP). Metric Horsepower equals SAE times 1.014.
Weights are approximate and include flywheel housing adapter and flexible input coupling.

* The max. input speed is 1650 rpm if MG-540 - SAE #00 is used with 21" rubber block drive.



INTERMEDIATE DUTY RATINGS FOR STANDARD & QUICKSHIFT® MARINE TRANSMISSIONS (Continued)



| Model | Drawing Number | SAE Housing | Ratios | KILOWATTS (HORSEPOWER) | | | Maximum Speed (rpm) | Dry Weight kg (lb) |
|---|----------------|---------------|--|------------------------|-------------|-------------|---------------------|--------------------|
| | | | | @ 1600 RPM | @ 1800 RPM | @ 2100 RPM | | |
| MG-540 (with flexible coupling) | X-9882-C | 0 00, Ind. | 1.93, 2.58, 2.90, 3.26 | 1049 (1407) | 1180 (1582) | — | 1900 | 2105 (4640) |
| | | | 3.91 | 893 (1198) | 1011 (1356) | 1193 (1600) | 2400 | |
| | | | 4.10, 4.60 | 1049 (1407) | 1180 (1582) | — | 1900 | |
| | | | 5.17 | 1038 (1392) | 1168 (1566) | 1362 (1826) | 2100 | |
| | | | 6.18 | 867 (1163) | 975 (1307) | 1138 (1526) | 2400 | |
| | | | 7.00 | 766 (1027) | 861 (1155) | 1005 (1348) | 2400 | |
| MG-5506 | 00D005604 | 0, 00 Ind. | 4.03, 4.55, 4.96, 5.44 | 1323 (1774) | 1489 (1998) | — | 2000 | 2200 (4846) |
| | | | 6.00 | 1197 (1605) | 1347 (1806) | — | 2400 | |
| MGX-5600 | 1022780 | 0, 00 Ind. | 2.53, 2.98, 3.51, 4.03 | 1602 (2148) | 1805 (2421) | 2105 (2823) | 2100 | 3132 (6890) |
| | | | 4.63, 5.04 | 1602 (2148) | 1805 (2421) | 2095 (2809) | | |
| | | | 5.76 | 1598 (2143) | 1760 (2360) | 1770 (2374) | | |
| | | | 6.04 | 1353 (1814) | 1502 (2014) | 1717 (2302) | | |
| | | | | @ 1800 RPM | @ 2100 RPM | @ 2300 RPM | | |
| MG-6449 A | 7-37423 | 1, 0 Ind. | 1.51, 1.73 | 769 (1031) | 897 (1203) | 958 (1285) | 2500 | 344 (757) |
| | | | 2.07 | 639 (857) | 746 (1000) | 794 (1065) | | |
| | | | 2.44 | 555 (744) | 647 (868) | 692 (928) | | |
| | | | 2.95 | 496 (665) | 577 (774) | 617 (828) | | |
| MG-6449 RV | 7-37431-A | — | 1.51, 1.73 | 769 (1031) | 897 (1203) | 958 (1285) | 2500 | 325 (716) |
| | | | 2.07 | 639 (857) | 746 (1000) | 794 (1065) | | |
| | | | 2.44 | 555 (744) | 647 (868) | 692 (928) | | |
| | | | 2.95 | 496 (665) | 577 (774) | 617 (828) | | |
| MGX-6598 DC | 7-40379 | 1, 0 Ind. | 2.46, 3.03 | 882 (1183) | 1000 (1341) | 1067 (1431) | 2500 | 580 (1278) |
| | | | 3.48 | 849 (1139) | 945 (1267) | 1008 (1352) | | |
| | | | 3.93 | 774 (1038) | 861 (1155) | 918 (1231) | | |
| | | | 4.43 | 722 (968) | 804 (1078) | 857 (1149) | | |
| MGX-6599 SC | 7-40384 | 1, 0 Ind. | 1.07, 1.30, 1.50, 1.66, 1.74, 1.97, 2.04 | 862 (1156) | 960 (1287) | 1023 (1372) | 2500 | 492 (1084) |
| | | | 2.19, 2.45 | 844 (1132) | 940 (1261) | 1002 (1344) | | |
| | | | 2.82 | 728 (976) | 811 (1088) | 864 (1159) | | |
| MGX-6599 A | 7-40263 | 1, 0 Ind. | 1.34, 1.51, 1.74, 2.03, 2.24 | 890 (1193) | 992 (1330) | 1057 (1417) | 2500 | 488 (1075) |
| | | | 2.48 | 841 (1128) | 937 (1257) | 999 (1340) | | |
| | | | 2.80 | 815 (1093) | 908 (1218) | 967 (1297) | | |
| MGX-6599 RV | 7-40336 | — | 1.34, 1.51, 1.74, 2.03, 2.24 | 890 (1193) | 992 (1330) | 1057 (1417) | 2500 | 468 (1031) |
| | | | 2.48 | 841 (1128) | 937 (1257) | 999 (1340) | | |
| | | | 2.80 | 815 (1093) | 908 (1218) | 967 (1297) | | |
| MG-6600 DC | 7-36712-A | 0 Ind. | 3.30 | 819 (1098) | 955 (1281) | 1046 (1403) | 2500 | 794 (1747) |
| | | | 4.11 | 819 (1098) | 955 (1281) | 1018 (1365) | | |
| | | | 4.68, 4.72 | 777 (1042) | 906 (1215) | 966 (1295) | | |
| | | | 5.21 | 693 (929) | 809 (1085) | 886 (1188) | | |
| | | | 6.05 | 617 (828) | 719 (964) | 788 (1057) | | |
| MGX-6620 SC | 7-40337 | 0 Ind. | 1.15, 1.33, 1.53, 1.73 | 1047 (1404) | 1166 (1564) | 1191 (1597) | 2500 | 575 (1267) |
| | | | 2.03 | 1025 (1375) | 1142 (1531) | 1184 (1588) | | |
| | | | 2.32 | 1019 (1366) | 1136 (1523) | 1184 (1588) | | |
| | | | 2.44 | 987 (1324) | 1100 (1475) | 1172 (1572) | | |
| | | | 2.72 | 915 (1227) | 1019 (1366) | 1086 (1456) | | |
| MGX-6620 A | 7-40264 | 0 Ind. | 1.55, 1.72, 2.09 | 1103 (1479) | 1234 (1655) | 1315 (1763) | 2500 | 580 (1278) |
| | | | 2.28, 2.42 | 1028 (1379) | 1145 (1535) | 1220 (1636) | | |
| | | | 2.73 | 910 (1220) | 1014 (1360) | 1080 (1448) | | |
| MGX-6620 RV | 7-40316 | — | 1.55, 1.72, 2.09 | 1103 (1479) | 1234 (1655) | 1315 (1763) | 2500 | 510 (1123) |
| | | | 2.28, 2.42 | 1028 (1379) | 1145 (1535) | 1220 (1636) | | |
| | | | 2.73 | 910 (1220) | 1014 (1360) | 1080 (1448) | | |

Important – See rating definitions, application information, and torsional compatibility notices on pages 1 and 2.
Ratings shown are in SAE Horsepower (HP). Metric Horsepower equals SAE times 1.014.
Weights are approximate and include flywheel housing adapter and flexible input coupling.



| Model | Drawing Number | SAE Housing | Ratios | KILOWATTS (HORSEPOWER) | | | Maximum Speed (rpm) | Dry Weight kg (lb) |
|--------------------|---------------------------------|-----------------|--|---|---|---|--------------------------------------|--------------------|
| | | | | @ 1800 RPM | @ 2100 RPM | @ 2300 RPM | | |
| MGX-6650 SC | 1002046 | 0, 00 Ind. | 1.51, 1.88, 2.03, 2.37 2.47, 2.93, 3.21 | 1069 (1434) | 1268 (1700) | 1386 (1859) | 2300 (1.51–2.37) 2500 (2.47–3.21) | 1001 (2205) |
| MGX-6690 SC | 1020674 | 0, 00 Ind. | 1.51, 1.88, 2.03, 2.37, 2.47 2.93 3.21 | 1201 (1611) 1201 (1611) 1201 (1611) | 1380 (1851) 1318 (1767) 1280 (1716) | 1438 (1928) 1386 (1859) 1386 (1859) | 2300 (1.51–2.37) 2500 (2.47–3.21) | 1001 (2205) |
| MGX-6848 SC | 1020675 | 0, 00 Ind. | 1.51, 1.88, 2.03, 2.47, 2.58, 2.93 3.21 | 1342 (1800) 1269 (1702) | 1566 (2100) 1453 (1948) | 1715 (2300) 1575 (2112) | 2300 (1.51–2.03) 2500 (2.47–3.21) | 1001 (2205) |
| | | | | @ 1600 RPM | @ 1800 RPM | @ 2100 RPM | | |
| MG-6984 SC | 7-37008 7-37481 P-71034-B | Ind. 0 00 | 1.18, 1.54, 2.06, 2.29, 2.52, 2.92 3.25 3.43 | 1470 (1971) 1244 (1668) 1000 (1341) | 1654 (2218) 1399 (1876) 1125 (1509) | 1929 (2587) 1632 (2189) 1313 (1761) | 2100 | 1192 (2628) |
| MG-6984 A | 7-37028 P-71093 P-71094 | Ind. 0 00 | 1.48, 1.97, 2.50, 2.79 2.93 | 1504 (2017) 1462 (1961) | 1692 (2269) 1645 (2206) | 1974 (2647) 1919 (2573) | 2100 | 909 (2000) |
| MG-6984 RV | 7-37042 | — | 1.48, 1.97, 2.50, 2.79 2.93 | 1504 (2017) 1462 (1961) | 1692 (2269) 1645 (2206) | 1974 (2647) 1919 (2573) | 2100 | 909 (2000) |
| MG-61242 SC | 7-37017 | Ind. | 1.16, 1.52, 2.08 2.47 2.96 | 2001 (2683) 1960 (2628) 1949 (2614) | 2251 (3019) 2205 (2957) 2193 (2941) | 2626 (3521) 2571 (3448) 2559 (3432) | 2100 | 1050 (2310) |
| MG-61242 A | 7-37046 | Ind. | 1.42, 2.07 2.44, 2.93 | 2078 (2787) 1949 (2614) | 2338 (3135) 2193 (2941) | 2728 (3658) 2559 (3432) | 2100 | 1105 (2431) |
| MG-61242 RV | 7-37049 | — | 1.42, 2.07 2.44, 2.93 | 2078 (2787) 1949 (2614) | 2338 (3135) 2193 (2941) | 2728 (3658) 2559 (3432) | 2100 | 1105 (2431) |



| Model | Drawing Number | SAE Housing | Ratios | KILOWATTS (HORSEPOWER) | | | Maximum Speed (rpm) | Dry Weight kg (lb) |
|--------------------|----------------|------------------------|--|------------------------|------------------------|------------------------|---------------------|--------------------|
| | | | | @ 1800 RPM | @ 2100 RPM | @ 2300 RPM | | |
| MG-5011 SC | PX-10270 | 3, 4, BW | 1.11, 1.27, 1.50, 2.00 2.44 | 74 (99) 57 (77) | 82 (110) 74 (99) | 90 (121) 82 (110) | 4400 | 49 (109) |
| MG-5011 A | PX-9999 | 3, 4, BW | 1.44, 1.90 2.39 | 74 (99) 66 (89) | 82 (110) 74 (99) | 90 (121) 82 (110) | 4400 | 49 (109) |
| MG-5011 IV | PX-10290 | 3, 4, BW | 1.14, 1.54, 2.06 2.51 | 74 (99) 57 (77) | 82 (110) 66 (89) | 90 (121) 74 (99) | 4400 | 77 (170) |
| MG-5050 SC | PX-12700 | 1, 2, 3, 4 SPEC. #3 | 1.00, 1.23, 1.53, 1.71, 2.04, 2.45 3.00 | 115 (154) 102 (137) | 128 (172) 119 (160) | 140 (188) 133 (178) | 3300 | 86 (189) |
| MG-5050 A | PX-12730 | 1, 2, 3, 4 SPEC. #3 | 1.12, 1.26, 1.50, 1.80, 2.04, 2.50 | 115 (154) | 128 (172) | 140 (188) | 3300 | 80 (176) |
| MG-5050 RV | PX-8760 | — | 1.12, 1.26, 1.50, 1.80, 2.04, 2.50 | 115 (154) | 128 (172) | 140 (188) | 3300 | 73 (160) |
| MG-5061 SC | PX-11650/-A | 1, 2, 3 SPEC. #3 | 1.15, 1.48, 1.77, 2.00, 2.43 3.00 | 135 (181) 126 (169) | 157 (211) 147 (197) | 171 (229) 160 (215) | 3300 | 98 (215) |
| MG-5061 A | PX-11640/-A | 1, 2, 3 SPEC. #3 | 1.13, 1.28, 1.54, 1.75, 2.00 2.47 | 135 (181) 126 (169) | 157 (211) 147 (197) | 171 (229) 160 (215) | 3300 | 95 (210) |
| MG-5061 V | PX-8735 | — | 1.13, 1.28, 1.54, 1.75, 2.00 2.47 | 135 (181) 126 (169) | 157 (211) 147 (197) | 171 (229) 160 (215) | 3300 | 95 (210) |
| MG-5062 V | PX-11660/-A | 1, 2, 3 SPEC. #3 | 1.19, 1.53, 1.83, 2.07, 2.51 | 135 (181) | 157 (211) | 171 (229) | 3300 | 142 (312) |
| MGX-5065 SC | PX-12410 | 1, 2, 3 SPEC. #3 | 1.08, 1.26, 1.47, 1.72, 2.04 2.43 | 227 (304) 208 (279) | 262 (351) 243 (326) | 285 (382) 266 (357) | 3300 | 111 (244) |
| MGX-5065 A | PX-12370 | 1, 2, 3 SPEC. #3 | 1.08, 1.26, 1.47, 1.72, 2.04 2.43 | 227 (304) 208 (279) | 262 (351) 243 (326) | 285 (382) 266 (357) | 3300 | 111 (244) |
| MG-5065 SC | PX-11480 | 1, 2, 3 SPEC. #3 | 1.08, 1.26, 1.47, 1.72, 2.04 2.43 | 227 (304) 208 (279) | 262 (351) 243 (326) | 285 (382) 266 (357) | 3300 | 111 (244) |
| MG-5065 A | PX-11165 | 1, 2, 3 SPEC. #3 | 1.08, 1.26, 1.47, 1.72, 2.04 2.43 | 227 (304) 208 (279) | 262 (351) 243 (326) | 285 (382) 266 (357) | 3300 | 111 (244) |
| MGX-5075 SC | PX-12620 | 1, 2, 3 SPEC. #3 | 1.06, 1.22, 1.33, 1.53, 1.77, 2.05 2.53, 2.88 | 205 (275) | 230 (308) | 246 (330) | 3500 | 122 (268) |
| MGX-5075 A | PX-12610 | 1, 2, 3 SPEC. #3 | 1.06, 1.22, 1.33, 1.53, 1.77, 2.05 2.53, 2.88 | 205 (275) | 230 (308) | 246 (330) | 3500 | 122 (268) |
| MGX-5075 IV | PX-12630 | 1, 2, 3 SPEC. #3 | 1.03, 1.30, 1.49, 1.72, 1.99, 2.46 | 205 (275) | 230 (308) | 246 (330) | 3500 | 150 (330) |
| MG-5075 SC | PX-10680/-A | 1, 2, 3 SPEC. #3 | 1.06, 1.22, 1.33, 1.53, 1.77, 2.05 2.53, 2.88 | 205 (275) | 230 (308) | 246 (330) | 3500 | 122 (268) |
| MG-5075 A | PX-10700/-A | 1, 2, 3 SPEC. #3 | 1.06, 1.22, 1.33, 1.53, 1.77, 2.05 2.53, 2.88 | 205 (275) | 230 (308) | 246 (330) | 3500 | 122 (268) |
| MG-5075 IV | PX-11530 | 1, 2, 3 SPEC. #3 | 1.03, 1.30, 1.49, 1.72, 1.99, 2.46 | 205 (275) | 230 (308) | 246 (330) | 3500 | 150 (330) |
| MG-5085 SC | PX-9260-B/-C | 1, 2, 3 SPEC. #3 | 1.05, 1.22, 1.42, 1.76, 1.96 2.33 | 250 (335) 225 (302) | 279 (375) 254 (341) | 295 (396) 271 (363) | 3200 | 120 (265) |
| MG-5085 A | PX-9360-B/-C | 1, 2, 3 SPEC. #3 | 1.05, 1.22, 1.47, 1.72, 2.04 2.43 | 250 (335) 217 (291) | 279 (375) 248 (333) | 295 (396) 268 (360) | 3200 | 123 (270) |
| MG-5082 SC | PX-11250-A | 1, 2 | 1.06, 1.33, 1.53, 1.77, 2.05, 2.53 2.88 | 301 (404) 273 (366) | 336 (451) 313 (420) | 350 (469) 331 (444) | 3200 | 135 (298) |
| MG-5082 A | PX-11040-B | 1, 2 | 1.06, 1.33, 1.53, 1.77, 2.05, 2.53 2.88 | 301 (404) 273 (366) | 336 (451) 313 (420) | 350 (469) 331 (444) | 3200 | 135 (298) |
| MGX-5086 SC | PX-12600 | 1, 2 | 1.06, 1.33, 1.53, 1.77, 2.05, 2.53 2.88 | 301 (404) 273 (366) | 336 (451) 313 (420) | 350 (469) 331 (444) | 3200 | 135 (298) |
| MGX-5086 A | PX-12290 | 1, 2 | 1.06, 1.33, 1.53, 1.77, 2.05, 2.53 2.88 | 301 (404) 273 (366) | 336 (451) 313 (420) | 350 (469) 331 (444) | 3200 | 135 (298) |

Important – See rating definitions, application information, and torsional compatibility notices on pages 1 and 2.
Ratings shown are in SAE Horsepower (HP). Metric Horsepower equals SAE times 1.014.
Weights are approximate and include flywheel housing adapter and flexible input coupling.



MEDIUM DUTY RATINGS FOR STANDARD & QUICKSHIFT® MARINE TRANSMISSIONS (Continued)



| Model | Drawing Number | SAE Housing | Ratios | KILOWATTS (HORSEPOWER) | | | Maximum Speed (rpm) | Dry Weight (kg (lb)) |
|-----------------------|-----------------------------|--------------------|--|---------------------------------------|---------------------------------------|---------------------------------------|----------------------------------|----------------------|
| | | | | @ 1800 RPM | @ 2100 RPM | @ 2300 RPM | | |
| MG-5091 SC | PX-10016 | 1, 2 | 1.17, 1.45, 1.71, 2.04 2.45, 2.95 3.33 | 274 (368) 265 (355) 219 (293) | 317 (425) 308 (413) 254 (340) | 347 (465) 330 (443) 274 (368) | 3000 | 220 (485) |
| MG-5091 DC | 1002155 | 1, 2 | 3.82, 4.50 5.05 | 262 (351) 210 (281) | 303 (406) 245 (328) | 330 (443) 268 (359) | 3000 | 297 (655) |
| MG-5090 A | PX-10015 | 1, 2 | 1.45, 1.73, 1.96 2.43 | 267 (358) 250 (335) | 309 (415) 291 (390) | 321 (430) 302 (405) | 3000 | 216 (475) |
| MGX-5095 SC | PX-12480 | 1, 2 | 1.15, 1.27, 1.47, 1.71, 2.00, 2.46 2.95 | 336 (451) 319 (428) | 374 (502) 360 (483) | 399 (535) 385 (516) | 3000 | 190 (419) |
| MGX-5095 A | PX-12360 | 1, 2 | 1.28, 1.52, 1.81, 2.04, 2.48 | 319 (428) | 358 (480) | 385 (516) | 3000 | 185 (407) |
| MGX-5095 RV | PX-12550 | — | 1.28, 1.52, 1.81, 2.04, 2.48 | 319 (428) | 358 (480) | 385 (516) | 3000 | 178 (392) |
| MG-5095 SC | PX-11535 | 1, 2 | 1.15, 1.27, 1.47, 1.71, 2.00, 2.46 2.95 | 336 (451) 319 (428) | 374 (502) 360 (483) | 399 (535) 385 (516) | 3000 | 190 (419) |
| MG-5095 A | PX-11495 | 1, 2 | 1.28, 1.52, 1.81, 2.04, 2.48 | 319 (428) | 358 (480) | 385 (516) | 3000 | 185 (407) |
| MG-5095 RV | PX-11600 | — | 1.28, 1.52, 1.81, 2.04, 2.48 | 319 (428) | 358 (480) | 385 (516) | 3000 | 178 (392) |
| MGX-5114 SC | PX-12490 | 1 | 0.93, 1.02, 1.12, 1.50, 1.74 2.04, 2.54 3.00 | 394 (528) 394 (528) 361 (484) | 451 (605) 451 (605) 410 (550) | 489 (656) 489 (656) 443 (595) | 2800 at .93:1 3000 for others | 203 (447) |
| MGX-5114 SC-HD | PX-12860 | 1 | 1.50, 1.74 2.04, 2.54 3.00 | 394 (528) 394 (528) 361 (484) | 451 (605) 451 (605) 410 (550) | 489 (656) 489 (656) 443 (595) | 3000 | 270 (595) |
| MGX-5114 DC | PX-12170 | 1 | 3.28, 3.43, 4.17, 4.59, 4.86 | 361 (484) | 419 (562) | 437 (586) | 3000 | 360 (793) |
| MGX-5114 A | 1024390 | 1, 2 | 1.03, 1.20, 1.48, 1.75, 1.92, 2.04 2.50 | 357 (479) 338 (453) | 407 (546) 385 (516) | 440 (590) 417 (559) | 3000 | 206 (455) |
| MGX-5114 RV | PX-11850 | — | 1.03, 1.20, 1.48, 1.75, 1.92, 2.04 2.50 | 357 (479) 338 (453) | 407 (546) 385 (516) | 440 (590) 417 (559) | 3000 | 198 (435) |
| MGX-5114 IV | PX-12510 | 1, 2 | 1.05, 1.23, 1.52, 1.80, 1.97 2.57 | 357 (479) 338 (453) | 407 (546) 385 (516) | 440 (590) 417 (559) | 3000 | 270 (595) |
| MG-5114 SC | PX-9785-B | 1 | 0.93, 1.02, 1.12, 1.50, 1.74 2.04, 2.54 3.00 | 394 (528) 394 (528) 361 (484) | 451 (605) 451 (605) 410 (550) | 489 (656) 489 (656) 443 (595) | 2800 at .93:1 3000 for others | 203 (447) |
| MG-5114 SC-HD | PX-11962 | 1 | 1.50, 1.74 2.04, 2.54 3.00 | 394 (528) 394 (528) 361 (484) | 451 (605) 451 (605) 410 (550) | 489 (656) 489 (656) 443 (595) | 3000 | 270 (595) |
| MG-5114 DC | PX-10250-A PX-12195 (FS) | 1 Ind. | 3.28, 3.43, 4.17, 4.59, 4.86 | 361 (484) | 419 (562) | 437 (586) | 3000 | 368 (810) |
| MG-5114 A | PX-11915 | 1, 2 | 1.03, 1.20, 1.48, 1.75, 1.92, 2.04 2.50 | 357 (479) 338 (453) | 407 (546) 385 (516) | 440 (590) 417 (559) | 3000 | 206 (455) |
| MG-5114 RV | PX-9830-A | — | 1.03, 1.20, 1.48, 1.75, 1.92, 2.04 2.50 | 357 (479) 338 (453) | 407 (546) 385 (516) | 440 (590) 417 (559) | 3000 | 198 (435) |
| MG-5114 IV | PX-11920 | 1, 2 | 1.05, 1.23, 1.52, 1.80, 1.97 2.57 | 357 (479) 338 (453) | 407 (546) 385 (516) | 440 (590) 417 (559) | 3000 | 270 (595) |
| MG-514C SC | X-9784-C | 1, 0 (14" only) | 1.51, 2.00, 2.50 3.00 3.50 | * 328 (440) 306 (410) 283 (380) | * 358 (480) 336 (450) 313 (420) | * 377 (505) 354 (475) 332 (445) | 2500 | 524 (1155) |
| MG-514C DC | X-9786-C | 1, 4 (14" only) | 4.13, 4.50, 5.16 6.04 | 298 (400) 272 (365) | 334 (448) 309 (415) | 358 (480) 347 (465) | 2500 | 658 (1450) |

Important — See rating definitions, application information, and torsional compatibility notices on pages 1 and 2.
Ratings shown are in SAE Horsepower (HP). Metric Horsepower equals SAE times 1.014.
Weights are approximate and include flywheel housing adapter and flexible input coupling.

* Requires 230 PSI coolant pressure.



MEDIUM DUTY RATINGS FOR STANDARD & QUICKSHIFT® MARINE TRANSMISSIONS (Continued)



| Model | Drawing Number | SAE Housing | Ratios | KILOWATTS (HORSEPOWER) | | | Maximum Speed (rpm) | Dry Weight (kg (lb)) |
|--|----------------|--------------------|--|---|--|---|--|----------------------------|
| | | | | @ 1600 RPM | @ 1800 RPM | @ 2100 RPM | | |
| MGX-5135 SC | PX-12450 | 1, 0 | 1.10, 1.28, 1.48, 1.73, 2.04, 2.57 2.90 | 447 (599) 413 (554) | 485 (650) 448 (601) | 542 (727) 500 (671) | 2800 | 300 (661) |
| MGX-5135 A | PX-12380 | 1, 0 | 1.16, 1.25, 1.53, 1.79, 2.00, 2.52 | 447 (599) | 485 (650) | 542 (727) | 2800 | 280 (617) |
| MGX-5135 RV | PX-12520 | — | 1.16, 1.25, 1.53, 1.79, 2.00, 2.52 | 447 (599) | 485 (650) | 542 (727) | 2800 | 258 (568) |
| MG-5135 SC | PX-11590 | 1, 0 | 1.10, 1.28, 1.48, 1.73, 2.04, 2.57 2.90 | 447 (599) 413 (554) | 485 (650) 448 (601) | 542 (727) 500 (671) | 2800 | 300 (661) |
| MG-5135 A | PX-11380 | 1, 0 | 1.16, 1.25, 1.53, 1.79, 2.00, 2.52 | 447 (599) | 485 (650) | 542 (727) | 2800 | 280 (617) |
| MG-5135 RV | PX-11945 | — | 1.16, 1.25, 1.53, 1.79, 2.00, 2.52 | 447 (599) | 485 (650) | 542 (727) | 2800 | 258 (568) |
| MGX-5145 SC | PX-12460 | 1, 0 | 1.03, 1.20, 1.33, 1.48, 1.75, 1.96 2.50 | 553 (742) 473 (634) | 596 (800) 522 (700) | 637 (854) 597 (801) | 2500 | 325 (716) |
| MGX-5145 A | PX-12420 | 1, 0 | 1.26, 1.48, 1.75, 1.96 2.50 | 553 (742) 473 (634) | 596 (800) 522 (700) | 637 (854) 597 (801) | 2500 | 333 (734) |
| MGX-5145 RV | PX-12530 | — | 1.26, 1.48, 1.75, 1.96 2.50 | 553 (742) 473 (634) | 596 (800) 522 (700) | 637 (854) 597 (801) | 2500 | 295 (650) |
| MG-5145 SC | PX-10885 | 1, 0 | 1.03, 1.20, 1.33, 1.48, 1.75, 1.96 2.50 | 553 (742) 473 (634) | 596 (800) 522 (700) | 637 (854) 597 (801) | 2500 | 325 (716) |
| MG-5145 A | PX-10830 | 1, 0 | 1.26, 1.48, 1.75, 1.96 2.50 | 553 (742) 473 (634) | 596 (800) 522 (700) | 637 (854) 597 (801) | 2500 | 333 (734) |
| MG-5145 RV | PX-10880 | — | 1.26, 1.48, 1.75, 1.96 2.50 | 553 (742) 473 (634) | 596 (800) 522 (700) | 637 (854) 597 (801) | 2500 | 295 (650) |
| MGX-5147 SC | PX-12470-A | 1, 0 | 1.20, 1.33, 1.48, 1.57, 1.75, 1.96 2.50 | 623 (835) 500 (671) | 671 (900) 552 (740) | 714 (957) 631 (846) | 2500 | 325 (716) |
| MGX-5147 A | PX-12430-A | 1, 0 | 1.26, 1.48, 1.75, 1.96 2.50 | 623 (835) 500 (671) | 671 (900) 552 (740) | 714 (957) 631 (846) | 2500 | 333 (734) |
| MGX-5147 RV | PX-12540-A | — | 1.03, 1.20, 1.33, 1.48, 1.75, 1.96 2.50 | 623 (835) 500 (671) | 671 (900) 552 (740) | 714 (957) 631 (846) | 2500 | 295 (650) |
| MGX-516 DC | 1023380 | 1, 0 (14" only) | 3.07, 3.50, 4.04, 4.52, 5.05 6.00 | 397 (532) 365 (489) | 447 (600) 406 (544) | 465 (624) 425 (570) | 2500 | 717 (1580) |
| MGX-5170 DC | 1023382 | 1, 0 | 3.12, 3.54, 4.06, 4.50, 5.03, 5.95 6.53, 6.95 | 475 (637) 415 (557) | 537 (720) 499 (615) | 578 (775) 499 (669) | 2500 | 850 (1872) |
| MG-520-1HP | XA-7255-B | 0 | 4.49, 5.00, 6.11 7.00 7.42 | 609 (817) 580 (778) 542 (727) | 685 (919) 645 (865) 603 (809) | 799 (1071) 739 (991) 691 (927) | 2500 | 1559 (3436) |
| MG-5202 SC | 1016103-C | 1, 0 Ind. | 1.17, 1.33, 1.53, 1.76, 2.03 2.48, 2.92, 3.48 | 540 (724) | 600 (805) | 678 (909) | 2500 | 587 (1292) |
| MG-5203 SC | 1016249-A | 1, 0 Ind. | 1.17, 1.33, 1.53, 1.76, 2.03 2.48, 2.92, 3.48 | 540 (724) | 600 (805) | 678 (909) | 2500 | 409 (900) |
| MG-5204 SC | 1016250-B | 1, 0 Ind. | 1.17, 1.33, 1.53, 1.76, 2.03, 2.48, 2.92 3.48 | 633 (849) 540 (724) | 716 (960) 600 (805) | 797 (1069) 678 (909) | 2750 (2500 at 1.17:1) | 409 (900) |
| MGX-5222 DC | 1022822-A | 1, 0 Ind. | 4.03, 4.59, 5.04, 6.10, 6.55, 6.96 | 540 (724) | 600 (805) | 678 (909) | 2500 | 1046 (2304) |
| MGX-5225 DC | 1022825-A | 1, 0 Ind. | 4.03, 4.59, 5.04, 5.57, 6.10 | 644 (864) | 727 (975) | 787 (1055) | 2500 | 1046 (2304) |
| MGX-5321 DC | 1022203-B | 0, 00 Ind. | 3.35, 4.06, 4.42, 4.96, 5.46 5.96 6.39 | 928 (1244) 865 (1160) 776 (1041) | 1044 (1400) 956 (1282) 863 (1157) | 1069 (1434) 1035 (1388) 967 (1297) | 2400 | 1754 (3864) |
| MG-540 (with rubber block drive) | X-9882-C | 0 00, Ind. | 1.93, 2.58, 2.90 3.26 3.91 4.10, 4.60 5.17 6.18 7.00 7.47 | 746 (1000) 666 (893) 597 (800) 732 (982) 662 (888) 636 (853) 519 (696) 492 (660) | 924 (1239) 855 (1147) 776 (1041) 917 (1230) 847 (1136) 820 (1100) 681 (913) 651 (873) | 999 (1340)* 950 (1274)* 866 (1161)* 990 (1328)* 941 (1262)* 913 (1224)* 762 (1022)* 740 (992)* | 1900* 2100* 2400* 1900* 2100* 2400* 2400* 2400* | 2019 (4450) 2105 (4640) |

Important – See rating definitions, application information, and torsional compatibility notices on pages 1 and 2.
Ratings shown are in SAE Horsepower (HP). Metric Horsepower equals SAE times 1.014.
Weights are approximate and include flywheel housing adapter and flexible input coupling.

* The max. input speed is 1650 rpm if MG-540 - SAE #00 is used with 21" rubber block drive.



MEDIUM DUTY RATINGS FOR STANDARD & QUICKSHIFT® MARINE TRANSMISSIONS (Continued)



| Model | Drawing Number | SAE Housing | Ratios | KILOWATTS (HORSEPOWER) | | | Maximum Speed (rpm) | Dry Weight kg (lb) |
|---|----------------|---------------|--|--------------------------|----------------------------|----------------------------|---------------------|----------------------------|
| | | | | @ 1200 RPM | @ 1600 RPM | @ 1800 RPM | | |
| MG-540 (with flexible coupling) | X-9882-C | 0 00, Ind. | 1.93, 2.58, 2.90 | 787 (1055) | 1049 (1407) | 1180 (1582) | 1900 | 2019 (4450) 2105 (4640) |
| | | | 3.26 | 869 (1165) | 1034 (1387) | 1163 (1560) | 2100 | |
| | | | 3.91 | 648 (869) | 864 (1159) | 972 (1303) | 2400 | |
| | | | 4.10, 4.60 | 787 (1055) | 1049 (1407) | 1180 (1582) | 1900 | |
| | | | 5.17 | 774 (1038) | 1032 (1384) | 1161 (1557) | 2100 | |
| | | | 6.18 | 644 (864) | 859 (1152) | 966 (1295) | 2400 | |
| | | | 7.00 | 571 (766) | 762 (1022) | 857 (1149) | 2400 | |
| 7.47 | 535 (717) | 715 (959) | 804 (1078) | 2400 | | | | |
| MG-5506 | 00D005604 | 0, 00 Ind. | 4.03, 4.55, 4.96, 5.44 6.00 | 960 (1287) 869 (1165) | 1281 (1718) 1159 (1554) | 1441 (1932) 1304 (1749) | 2000 | 2200 (4846) |
| MGX-5600 | 1022780 | 0, 00 Ind. | 2.53, 2.98, 3.51, 4.03, 4.63, 5.04 | 1230 (1649) | 1598 (2143) | 1760 (2360) | 2100 | 3132 (6890) |
| | | | 5.76 | 1200 (1609) | 1566 (2100) | 1737 (2329) | | |
| | | | 6.04 | 1016 (1362) | 1309 (1755) | 1451 (1946) | | |
| | | | | @ 1600 RPM | @ 1800 RPM | @ 2100 RPM | | |
| MG-6449 A | 7-37423 | 1, 0 Ind. | 1.51, 1.73 | 680 (912) | 741 (994) | 833 (1117) | 2500 | 344 (757) |
| | | | 2.07 | 565 (758) | 617 (827) | 695 (932) | | |
| | | | 2.44 | 494 (662) | 537 (720) | 602 (807) | | |
| | | | 2.95 | 435 (583) | 489 (656) | 570 (764) | | |
| MG-6449 RV | 7-37431-A | — | 1.51, 1.73 | 680 (912) | 741 (994) | 833 (1117) | 2500 | 325 (716) |
| | | | 2.07 | 565 (758) | 617 (827) | 695 (932) | | |
| | | | 2.44 | 494 (662) | 537 (720) | 602 (807) | | |
| | | | 2.95 | 435 (583) | 489 (656) | 570 (764) | | |
| MGX-6598 DC | 7-40379 | 1, 0 Ind. | 2.46, 3.03 | 759 (1018) | 824 (1105) | 918 (1231) | 2500 | 580 (1278) |
| | | | 3.48 | 717 (961) | 779 (1045) | 868 (1164) | | |
| | | | 3.93 | 653 (876) | 710 (952) | 790 (1059) | | |
| | | | 4.43 | 609 (817) | 662 (888) | 737 (988) | | |
| MGX-6599 SC | 7-40384 | 1, 0 Ind. | 1.07, 1.30, 1.50, 1.66, 1.74, 1.97, 2.04 | 713 (956) | 774 (1038) | 862 (1156) | 2500 | 492 (1084) |
| | | | 2.19, 2.45 | 713 (956) | 774 (1038) | 862 (1156) | | |
| | | | 2.82 | 615 (825) | 668 (896) | 744 (998) | | |
| MGX-6599 A | 7-40263 | 1, 0 Ind. | 1.34, 1.51, 1.74, 2.03, 2.24 | 754 (1011) | 820 (1100) | 910 (1220) | 2500 | 488 (1075) |
| | | | 2.48 | 711 (953) | 772 (1035) | 860 (1153) | | |
| | | | 2.80 | 654 (877) | 709 (951) | 790 (1059) | | |
| MGX-6599 RV | 7-40336 | — | 1.34, 1.51, 1.74, 2.03, 2.24 | 754 (1011) | 820 (1100) | 910 (1220) | 2500 | 468 (1031) |
| | | | 2.48 | 711 (953) | 772 (1035) | 860 (1153) | | |
| | | | 2.80 | 654 (877) | 709 (951) | 790 (1059) | | |
| MG-6600 DC | 7-36712-A | 0 Ind. | 3.30, 4.11 | 884 (1185) | 960 (1287) | 998 (1338) | 2500 | 575 (1267) |
| | | | 4.68, 4.72 | 861 (1155) | 935 (1254) | 998 (1338) | | |
| | | | 5.22 | 834 (1118) | 906 (1215) | 998 (1338) | | |
| | | | 6.05 | 773 (1037) | 839 (1125) | 935 (1254) | | |
| MGX-6620 SC | 7-40337 | 0 Ind. | 1.15, 1.33, 1.53, 1.73 | 884 (1185) | 960 (1287) | 998 (1338) | 2500 | 794 (1747) |
| | | | 2.03, 2.32 | 861 (1155) | 935 (1254) | 998 (1338) | | |
| | | | 2.44 | 834 (1118) | 906 (1215) | 998 (1338) | | |
| | | | 2.72 | 773 (1037) | 839 (1125) | 935 (1254) | | |
| MGX-6620 A | 7-40264 | 0 Ind. | 1.55, 1.72, 2.09 | 926 (1242) | 1021 (1369) | 1132 (1518) | 2500 | 580 (1278) |
| | | | 2.28, 2.42 | 868 (1164) | 943 (1265) | 1050 (1408) | | |
| | | | 2.73 | 769 (1031) | 835 (1120) | 930 (1247) | | |
| MGX-6620 RV | 7-40316 | — | 1.55, 1.72, 2.09 | 926 (1242) | 1021 (1369) | 1132 (1518) | 2500 | 510 (1123) |
| | | | 2.28, 2.42 | 868 (1164) | 943 (1265) | 1050 (1408) | | |
| | | | 2.73 | 769 (1031) | 835 (1120) | 930 (1247) | | |

Important – See rating definitions, application information, and torsional compatibility notices on pages 1 and 2.
Ratings shown are in SAE Horsepower (HP). Metric Horsepower equals SAE times 1.014.
Weights are approximate and include flywheel housing adapter and flexible input coupling.



| Model | Drawing Number | SAE Housing | Ratios | KILOWATTS (HORSEPOWER) | | | Maximum Speed (rpm) | Dry Weight kg (lb) |
|--|---------------------------------|-----------------|--|---|---|---|--------------------------------------|--------------------|
| | | | | @ 1600 RPM | @ 1800 RPM | @ 2100 RPM | | |
| MGX-6650 SC | 1002046 | 0, 00 Ind. | 1.51, 1.88, 2.03, 2.37 2.47, 2.93, 3.21 | 928 (1244) | 1044 (1400) | 1174 (1574) | 2300 (1.51–2.37) 2500 (2.47–3.21) | 1001 (2205) |
| MGX-6690 SC | 1020674 | 0, 00 Ind. | 1.51, 1.88, 2.03, 2.37, 2.47 2.93 3.21 | 1054 (1413) 1034 (1387) 1018 (1365) | 1174 (1574) 1144 (1534) 1119 (1501) | 1277 (1712) 1209 (1621) 1194 (1601) | 2300 (1.51–2.37) 2500 (2.47–3.21) | 1001 (2205) |
| MGX-6848 SC | 1020675 | 0, 00 Ind. | 1.51, 1.88, 2.03, 2.47 2.58, 2.93 3.21 | 1187 (1592) 1187 (1592) 1103 (1479) | 1342 (1800) 1342 (1800) 1226 (1644) | 1566 (2100) 1518 (2036) 1404 (1883) | 2300 (1.51–2.03) 2500 (2.47–3.21) | 1001 (2205) |
| | | | | @ 1200 RPM | @ 1600 RPM | @ 1800 RPM | | |
| MG-6984 SC | 7-37008 7-37481 P-71034-B | Ind. 0 00 | 1.18, 1.54, 2.06, 2.29, 2.52, 2.92 3.25 3.43 | 902 (1210) 818 (1097) 616 (826) | 1203 (1613) 1090 (1462) 821 (1101) | 1353 (1814) 1227 (1645) 924 (1239) | 2100 | 1192 (2628) |
| MG-6984 A | 7-37028 P-71093 P-71094 | Ind. 0 00 | 1.48, 1.97, 2.50, 2.79 2.93 | 923 (1238) 887 (1189) | 1230 (1649) 1182 (1585) | 1384 (1856) 1330 (1784) | 2100 | 909 (2000) |
| MG-6984 RV | 7-37042 | — | 1.48, 1.97, 2.50, 2.79 2.93 | 923 (1238) 887 (1189) | 1230 (1649) 1182 (1585) | 1384 (1856) 1330 (1784) | 2100 | 909 (2000) |
| MGX-61000 SC * | 1024420 | 00 Ind. | 2.22, 2.54, 2.72, 3.03, 3.39 | 1119 (1500) | 1491 (2000) | 1678 (2250) | 2100 | 1780 (3920) |
| MG-61242 SC | 7-37017 | Ind. | 1.16, 1.52, 2.08, 2.47 2.96 | 1315 (1763) 1268 (1700) | 1754 (2352) 1691 (2268) | 1973 (2646) 1902 (2551) | 2100 | 1050 (2310) |
| MG-61242 A | 7-37046 | Ind. | 1.42, 2.07, 2.44 2.93 | 1315 (1763) 1263 (1694) | 1754 (2352) 1685 (2260) | 1973 (2646) 1896 (2543) | 2100 | 1105 (2431) |
| MG-61242 RV | 7-37049 | — | 1.42, 2.07, 2.44 2.93 | 1315 (1763) 1263 (1694) | 1754 (2352) 1685 (2260) | 1973 (2646) 1896 (2543) | 2100 | 1105 (2431) |
| MGX-61500 SC * | 1024500 | Ind. | 1.84, 1.98, 2.45, 2.97 3.03, 3.41 | 1560 (2092) 1333 (1788) | 2080 (2789) 1778 (2384) | 2340 (3138) 2000 (2682) | 2100 | 1920 (4230) |
| MGX-61500 SC-HL** MGX-61500 SC-HR** | 1023610 1023611 | Ind. | 1.84, 1.98, 2.18, 2.45, 2.97 | 1560 (2092) | 2080 (2789) | 2340 (3138) | 2100 | 2200 (4846) |

* Consult Twin Disc for availability of MGX-61000 SC and MGX-61500 SC, all ratios.

** Consult Twin Disc for availability and technical details to the horizontal offset transmissions MGX-61500 SC-HL and MGX-61500 SC-HR.



| Model | Drawing Number | SAE Housing | Ratios | KILOWATTS (HORSEPOWER) | | | Maximum Speed (rpm) | Dry Weight kg (lb) |
|--------------------|------------------------|------------------------|--|--|--|--|---------------------|------------------------|
| | | | | @ 1800 RPM | @ 2100 RPM | @ 2300 RPM | | |
| MG-340 | IT101317501 | 5, BW | 1.45 2.00 2.60 | 18 (24) 13 (17) 9 (12) | 21 (28) 15 (20) 11 (15) | 23 (31) 16 (21) 12 (16) | 4500 | 9 (20) |
| MG-360 | IT101318505 | 5, BW | 1.55 2.00 2.45 2.83 | 23 (31) 21 (28) 17 (23) 14 (19) | 26 (35) 24 (32) 20 (27) 16 (22) | 29 (39) 26 (35) 21 (28) 17 (23) | 5000 | 14 (31) |
| MG-5005 A | IT345ATD0001 | 3, 4, 5 | 1.54, 2.00 2.47 | 35 (47) 26 (35) | 41 (55) 30 (40) | 45 (60) 33 (44) | 4500 | 25 (55) |
| MG-5012 SC | IT1013079B01 | 3, 4, BW | 1.52 2.09 2.40 2.78 | 74 (99) 64 (86) 58 (77) 50 (67) | 86 (115) 75 (100) 67 (90) 58 (78) | 94 (126) 82 (110) 74 (99) 64 (86) | 4500 | 53 (117) |
| MG-5020 SC | IT1013049B01 | 3, 4, BW | 1.50, 2.04 2.50 2.94 | 104 (139) 83 (111) 72 (96) | 121 (162) 97 (130) 84 (112) | 133 (178) 106 (142) 92 (123) | 4000 | 75 (165) |
| MG-5025 A | IT1013170 | 3, 4, BW | 1.52, 2.09 2.40 | 59 (79) 52 (70) | 69 (93) 61 (82) | 75 (101) 67 (90) | 4500 | 36 (79) |
| MG-5055 A | IT101316101 | 3, 4, BW | 1.53, 2.08 2.60 | 105 (141) 60 (82) | 123 (165) 70 (95) | 135 (181) 77 (103) | 4000 | 54 (119) |
| MG-5010 DC | PX-9400 | 3, 4, BW | 3.00 3.52 4.00 | 70 (94) 61 (82) 55 (74) | 82 (110) 72 (96) 65 (87) | 93 (125) 82 (110) 74 (100) | 4000 | 75 (165) |
| MG-5011 SC | PX-10270 | 3, 4, BW | 1.11, 1.27, 1.50, 2.00 2.44 | 67 (90) 52 (70) | 75 (101) 60 (80) | 82 (110) 67 (90) | 4400 | 49 (109) |
| MG-5011 A | PX-9999 | 3, 4, BW | 1.44, 1.90 2.39 | 67 (90) 60 (80) | 75 (101) 67 (90) | 82 (110) 75 (101) | 4400 | 49 (109) |
| MG-5011 IV | PX-10290 | 3, 4, BW | 1.14, 1.54, 2.06 2.51 | 67 (90) 52 (70) | 75 (101) 60 (80) | 82 (110) 67 (90) | 4400 | 77 (170) |
| MG-5050 SC | PX-12700 | 1, 2, 3, 4 SPEC. #3 | 1.00, 1.23, 1.53, 1.71, 2.04, 2.45 3.00 | 104 (139) 93 (125) | 116 (156) 108 (145) | 127 (170) 121 (162) | 3300 | 86 (189) |
| MG-5050 A | PX-12730 | 1, 2, 3, 4 SPEC. #3 | 1.12, 1.26, 1.50, 1.80, 2.04, 2.50 | 104 (139) | 116 (156) | 127 (170) | 3300 | 80 (176) |
| MG-5050 RV | PX-8760 | — | 1.12, 1.26, 1.50, 1.80, 2.04, 2.50 | 104 (139) | 116 (156) | 127 (170) | 3300 | 73 (160) |
| MG-506-1 | XA-7022-A XA-7048-A | 1, 2, 3 1, 2, 3 | 1.09, 1.50, 1.97 2.50, 2.96 | 94 (126) 94 (126) | 104 (140) 104 (140) | 110 (147) 110 (147) | 3000 3000 | 100 (220) 102 (224) |
| MG-5061 SC | PX-11650/-A | 1, 2, 3 SPEC. #3 | 1.15, 1.48, 1.77, 2.00, 2.43 3.00 | 123 (165) 115 (154) | 142 (190) 133 (178) | 155 (208) 145 (194) | 3300 | 98 (215) |
| MG-5061 A | PX-11640/-A | 1, 2, 3 SPEC. #3 | 1.13, 1.28, 1.54, 1.75, 2.00 2.47 | 123 (165) 115 (154) | 142 (190) 133 (178) | 155 (208) 145 (194) | 3300 | 95 (210) |
| MG-5061 V | PX-8735 | — | 1.13, 1.28, 1.54, 1.75, 2.00 2.47 | 123 (165) 115 (154) | 142 (190) 133 (178) | 155 (208) 145 (194) | 3300 | 95 (210) |
| MG-5062 V | PX-11660/-A | 1, 2, 3 SPEC. #3 | 1.19, 1.53, 1.83, 2.07, 2.51 | 123 (165) | 142 (190) | 155 (208) | 3300 | 142 (312) |
| MGX-5065 SC | PX-12410 | 1, 2, 3 SPEC. #3 | 1.08, 1.26, 1.47, 1.72, 2.04 2.43 | 216 (290) 199 (267) | 250 (335) 232 (311) | 272 (365) 254 (341) | 3300 | 111 (244) |
| MGX-5065 A | PX-12370 | 1, 2, 3 SPEC. #3 | 1.08, 1.26, 1.47, 1.72, 2.04 2.43 | 216 (290) 199 (267) | 250 (335) 232 (311) | 272 (365) 254 (341) | 3300 | 111 (244) |
| MG-5065 SC | PX-11480 | 1, 2, 3 SPEC. #3 | 1.08, 1.26, 1.47, 1.72, 2.04 2.43 | 216 (290) 199 (267) | 250 (335) 232 (311) | 272 (365) 254 (341) | 3300 | 111 (244) |
| MG-5065 A | PX-11165 | 1, 2, 3 SPEC. #3 | 1.08, 1.26, 1.47, 1.72, 2.04 2.43 | 216 (290) 199 (267) | 250 (335) 232 (311) | 272 (365) 254 (341) | 3300 | 111 (244) |

Important – See rating definitions, application information, and torsional compatibility notices on pages 1 and 2.
Ratings shown are in SAE Horsepower (HP). Metric Horsepower equals SAE times 1.014.
Weights are approximate and include flywheel housing adapter and flexible input coupling.



| Model | Drawing Number | SAE Housing | Ratios | KILOWATTS (HORSEPOWER) | | | Maximum Speed (rpm) | Dry Weight (kg (lb)) |
|--------------------|----------------|---------------------|--|--|--|--|---------------------|----------------------|
| | | | | @ 1800 RPM | @ 2100 RPM | @ 2300 RPM | | |
| MGX-5075 SC | PX-12620 | 1, 2, 3 SPEC. #3 | 1.06, 1.22, 1.33, 1.53, 1.77, 2.05 2.53, 2.88 | 186 (249) | 209 (280) | 224 (300) | 3500 | 122 (268) |
| MGX-5075 A | PX-12610 | 1, 2, 3 SPEC. #3 | 1.06, 1.22, 1.33, 1.53, 1.77, 2.05 2.53, 2.88 | 186 (249) | 209 (280) | 224 (300) | 3500 | 122 (268) |
| MGX-5075 IV | PX-12630 | 1, 2, 3 SPEC. #3 | 1.03, 1.30, 1.49, 1.72, 1.99, 2.46 | 186 (249) | 209 (280) | 224 (300) | 3500 | 150 (330) |
| MG-5075 SC | PX-10680/-A | 1, 2, 3 SPEC. #3 | 1.06, 1.22, 1.33, 1.53, 1.77, 2.05 2.53, 2.88 | 186 (249) | 209 (280) | 224 (300) | 3500 | 122 (268) |
| MG-5075 A | PX-10700/-A | 1, 2, 3 SPEC. #3 | 1.06, 1.22, 1.33, 1.53, 1.77, 2.05 2.53, 2.88 | 186 (249) | 209 (280) | 224 (300) | 3500 | 122 (268) |
| MG-5075 IV | PX-11530 | 1, 2, 3 SPEC. #3 | 1.03, 1.30, 1.49, 1.72, 1.99, 2.46 | 186 (249) | 209 (280) | 224 (300) | 3500 | 150 (330) |
| MG-509 | X-9816F | 1, 2 | 1.45, 2.00 2.48 2.95 3.39 | 175 (235) 170 (228) 170 (228) 128 (170) | 204 (273) 194 (260) 186 (250) 148 (198) | 224 (300)* 213 (285)* 205 (275)* 160 (215)* | 3000* | 259 (572) |
| | X-9835 | 1, 2 | 3.83, 4.50 4.95 | 175 (235) 134 (180) | 204 (273) 157 (210) | 224 (300)* 172 (230)* | 3000* | 323 (712) |
| MG-5085 SC | PX-9260-B/-C | 1, 2, 3 SPEC. #3 | 1.05, 1.22, 1.42, 1.76, 1.96 2.33 | 227 (304) 205 (275) | 254 (340) 231 (310) | 265 (355) 243 (326) | 3200 | 120 (265) |
| MG-5085 A | PX-9360-B/-C | 1, 2, 3 SPEC. #3 | 1.05, 1.22, 1.47, 1.72, 2.04 2.43 | 227 (304) 205 (275) | 254 (340) 231 (310) | 265 (355) 243 (326) | 3200 | 123 (270) |
| MG-5082 SC | PX-11250-A | 1, 2 | 1.06, 1.33, 1.53, 1.77, 2.05, 2.53 2.88 | 262 (351) | 292 (392) | 310 (416) | 3200 | 135 (298) |
| MG-5082 A | PX-11040-B | 1, 2 | 1.06, 1.33, 1.53, 1.77, 2.05, 2.53 2.88 | 262 (351) | 292 (392) | 310 (416) | 3200 | 135 (298) |
| MGX-5086 SC | PX-12600 | 1, 2 | 1.06, 1.33, 1.53, 1.77, 2.05, 2.53 2.88 | 262 (351) | 292 (392) | 310 (416) | 3200 | 135 (298) |
| MGX-5086 A | PX-12290 | 1, 2 | 1.06, 1.33, 1.53, 1.77, 2.05, 2.53 2.88 | 262 (351) | 292 (392) | 310 (416) | 3200 | 135 (298) |
| MG-5091 SC | PX-10016 | 1, 2 | 1.17, 1.45, 1.71, 2.04, 2.45, 2.95 3.33 | 242 (325) 205 (275) | 280 (375) 239 (320) | 306 (410) 261 (350) | 3000 | 220 (485) |
| MG-5091 DC | 1002155 | 1, 2 | 3.82, 4.50 5.05 | 242 (325) 205 (275) | 280 (375) 239 (320) | 306 (410) 261 (350) | 3000 | 297 (655) |
| MG-5090 A | PX-10015 | 1, 2 | 1.45, 1.73, 1.96, 2.43 | 239 (320) | 276 (370) | 287 (385) | 3000 | 216 (475) |
| MGX-5095 SC | PX-12480 | 1, 2 | 1.15, 1.27, 1.47, 1.71, 2.00, 2.46 2.95 | 298 (400) | 335 (449) | 360 (483) | 3000 | 190 (419) |
| MGX-5095 A | PX-12360 | 1, 2 | 1.28, 1.52, 1.81, 2.04 2.48 | 298 (400) | 335 (449) | 360 (483) | 3000 | 185 (407) |
| MGX-5095 RV | PX-12550 | — | 1.28, 1.52, 1.81, 2.04 2.48 | 298 (400) | 335 (449) | 360 (483) | 3000 | 178 (392) |
| MG-5095 SC | PX-11535 | 1, 2 | 1.15, 1.27, 1.47, 1.71, 2.00, 2.46 2.95 | 298 (400) | 335 (449) | 360 (483) | 3000 | 190 (419) |
| MG-5095 A | PX-11495 | 1, 2 | 1.28, 1.52, 1.81, 2.04 2.48 | 298 (400) | 335 (449) | 360 (483) | 3000 | 185 (407) |
| MG-5095 RV | PX-11600 | — | 1.28, 1.52, 1.81, 2.04 2.48 | 298 (400) | 335 (449) | 360 (483) | 3000 | 178 (392) |

Important – See rating definitions, application information, and torsional compatibility notices on pages 1 and 2.
Ratings shown are in SAE Horsepower (HP). Metric Horsepower equals SAE times 1.014.
Weights are approximate and include flywheel housing adapter and flexible input coupling.

* A6911 driving ring has 2150 rpm maximum speed.



| Model | Drawing Number | SAE Housing | Ratios | KILOWATTS (HORSEPOWER) | | | Maximum Speed (rpm) | Dry Weight (kg (lb)) |
|-----------------------|-----------------------------|--------------------|--|-------------------------------------|-------------------------------------|-------------------------------------|----------------------------------|----------------------|
| | | | | @ 1800 RPM | @ 2100 RPM | @ 2300 RPM | | |
| MGX-5114 SC | PX-12490 | 1 | 0.93, 1.02, 1.12, 1.50, 1.74 2.04, 2.54 3.00 | 358 (480) 358 (480) 328 (440) | 410 (550) 410 (550) 373 (500) | 444 (595) 444 (595) 403 (540) | 2800 at .93:1 3000 for others | 203 (447) |
| MGX-5114 SC-HD | PX-12860 | 1 | 1.50, 1.74, 2.04, 2.54 3.00 | 358 (480) 328 (440) | 410 (550) 373 (500) | 444 (595) 403 (540) | 3000 | 270 (595) |
| MGX-5114 DC | PX-12170 | 1 | 3.28, 3.43, 4.17, 4.59, 4.86 | 347 (465) | 403 (540) | 421 (565) | 3000 | 360 (793) |
| MGX-5114 A | 1024390 | 1, 2 | 1.03, 1.20, 1.48, 1.75, 1.92, 2.04 2.50 | 347 (465) 321 (430) | 387 (519) 366 (491) | 418 (561) 396 (531) | 3000 | 206 (455) |
| MGX-5114 RV | PX-11850 | — | 1.03, 1.20, 1.48, 1.75, 1.92, 2.04 2.50 | 347 (465) 321 (430) | 387 (519) 366 (491) | 418 (561) 396 (531) | 3000 | 198 (435) |
| MGX-5114 IV | PX-12510 | 1, 2 | 1.05, 1.23, 1.52, 1.80, 1.97 2.57 | 347 (465) 321 (430) | 387 (519) 366 (491) | 418 (561) 396 (531) | 3000 | 270 (595) |
| MG-5114 SC | PX-9785-B | 1 | 0.93, 1.02, 1.12, 1.50, 1.74, 2.04, 2.54 3.00 | 358 (480) 328 (440) | 410 (550) 373 (500) | 444 (595) 403 (540) | 2800 at .93:1 3000 for others | 203 (447) |
| MG-5114 SC-HD | PX-11962 | 1 Ind. | 1.50, 1.74, 2.04, 2.54 3.00 | 358 (480) 328 (440) | 410 (550) 373 (500) | 444 (595) 403 (540) | 3000 | 270 (595) |
| MG-5114 DC | PX-10250-A PX-12195 (FS) | 1 Ind. | 3.28, 3.43, 4.17, 4.59, 4.86 | 347 (465) | 403 (540) | 421 (565) | 3000 | 368 (810) |
| MG-5114 A | PX-11915 | 1, 2 | 1.03, 1.20, 1.48, 1.75, 1.92, 2.04 2.50 | 347 (465) 321 (430) | 387 (519) 366 (491) | 418 (561) 396 (531) | 3000 | 206 (455) |
| MG-5114 RV | PX-9830-A | — | 1.03, 1.20, 1.48, 1.75, 1.92, 2.04 2.50 | 347 (465) 321 (430) | 387 (519) 366 (491) | 418 (561) 396 (531) | 3000 | 198 (435) |
| MG-5114 IV | PX-11920 | 1, 2 | 1.05, 1.23, 1.52, 1.80, 1.97 2.57 | 347 (465) 321 (430) | 387 (519) 366 (491) | 418 (561) 396 (531) | 3000 | 270 (595) |
| | | | | @ 1600 RPM | @ 1800 RPM | @ 2100 RPM | | |
| MG-514C SC | X-9784-C | 1, 0 (14" only) | 1.51, 2.00, 2.50, 3.00, 3.50 | 254 (340) | 283 (380) | 313 (420) | 2500 | 524 (1155) |
| MG-514C DC | X-9786-C | 1, 0 (14" only) | 4.13, 4.50, 5.16 6.00 | 254 (340) 242 (325) | 283 (380) 272 (365) | 313 (420) 302 (405) | 2500 | 658 (1450) |
| MGX-5135 SC | PX-12450 | 1, 0 | 1.10, 1.28, 1.48, 1.73, 2.04, 2.57 2.90 | 410 (550) 376 (504) | 445 (597) 408 (547) | 497 (666) 456 (611) | 2800 | 300 (661) |
| MGX-5135 A | PX-12380 | 1, 0 | 1.16, 1.25, 1.53, 1.79, 2.00 2.52 | 410 (550) | 445 (597) | 497 (666) | 2800 | 280 (617) |
| MGX-5135 RV | PX-12520 | — | 1.16, 1.25, 1.53, 1.79, 2.00 2.52 | 410 (550) | 445 (597) | 497 (666) | 2800 | 258 (568) |
| MG-5135 SC | PX-11590 | 1, 0 | 1.10, 1.28, 1.48, 1.73, 2.04, 2.57 2.90 | 410 (550) 376 (504) | 445 (597) 408 (547) | 497 (666) 456 (611) | 2800 | 300 (661) |
| MG-5135 A | PX-11380 | 1, 0 | 1.16, 1.25, 1.53, 1.79, 2.00 2.52 | 410 (550) | 445 (597) | 497 (666) | 2800 | 280 (617) |
| MG-5135 RV | PX-11945 | — | 1.16, 1.25, 1.53, 1.79, 2.00 2.52 | 410 (550) | 445 (597) | 497 (666) | 2800 | 258 (568) |
| MGX-5145 SC | PX-12460 | 1, 0 | 1.03, 1.20, 1.33, 1.48, 1.75, 1.96 2.50 | 510 (684) 438 (587) | 552 (740) 485 (650) | 596 (799) 555 (744) | 2500 | 325 (716) |
| MGX-5145 A | PX-12420 | 1, 0 | 1.26, 1.48, 1.75, 1.96 2.50 | 510 (684) 438 (587) | 552 (740) 485 (650) | 596 (799) 555 (744) | 2500 | 333 (734) |
| MGX-5145 RV | PX-12530 | — | 1.26, 1.48, 1.75, 1.96 2.50 | 510 (684) 438 (587) | 552 (740) 485 (650) | 596 (799) 555 (744) | 2500 | 295 (650) |
| MG-5145 SC | PX-10885 | 1, 0 | 1.03, 1.20, 1.33, 1.48, 1.75, 1.96 2.50 | 510 (684) 438 (587) | 552 (740) 485 (650) | 596 (799) 555 (744) | 2500 | 325 (716) |
| MG-5145 A | PX-10830 | 1, 0 | 1.26, 1.48, 1.75, 1.96 2.50 | 510 (684) 438 (587) | 552 (740) 485 (650) | 596 (799) 555 (744) | 2500 | 333 (734) |
| MG-5145 RV | PX-10880 | — | 1.26, 1.48, 1.75, 1.96 2.50 | 510 (684) 438 (587) | 552 (740) 485 (650) | 596 (799) 555 (744) | 2500 | 295 (650) |

Important – See rating definitions, application information, and torsional compatibility notices on pages 1 and 2.
Ratings shown are in SAE Horsepower (HP). Metric Horsepower equals SAE times 1.014.
Weights are approximate and include flywheel housing adapter and flexible input coupling.



CONTINUOUS DUTY RATINGS FOR STANDARD & QUICKSHIFT® MARINE TRANSMISSIONS (Continued)



| Model | Drawing Number | SAE Housing | Ratios | KILOWATTS (HORSEPOWER) | | | Maximum Speed (rpm) | Dry Weight (kg (lb)) |
|--|----------------|--------------------|--|--|---|---|---|----------------------------|
| | | | | @ 1600 RPM | @ 1800 RPM | @ 2100 RPM | | |
| MGX-5147 SC | PX-12470-A | 1, 0 | 1.20, 1.33, 1.48, 1.57, 1.75, 1.96 2.50 | 565 (758) 481 (645) | 612 (821) 537 (720) | 660 (885) 615 (825) | 2500 | 325 (716) |
| MGX-5147 A | PX-12430-A | 1, 0 | 1.26, 1.48, 1.75, 1.96 2.50 | 565 (758) 481 (645) | 612 (821) 537 (720) | 660 (885) 615 (825) | 2500 | 333 (734) |
| MGX-5147 RV | PX-12540-A | — | 1.03, 1.20, 1.33, 1.48, 1.75, 1.96 2.50 | 565 (758) 481 (645) | 612 (821) 537 (720) | 660 (885) 615 (825) | 2500 | 295 (650) |
| MGX-516 DC | 1023380 | 1, 0 (14" only) | 3.07, 3.50, 4.04, 4.52, 5.05 6.00 | 397 (532) 365 (489) | 447 (600) 406 (544) | 465 (624) 425 (570) | 2500 | 717 (1580) |
| MGX-5170 DC | 1023382 | 1, 0 | 3.12, 3.54, 4.06, 4.50, 5.03, 5.95 6.53, 6.95 | 448 (601) 408 (547) | 507 (680) 459 (615) | 541 (725) 478 (641) | 2500 | 850 (1872) |
| MG-520-1HP | XA-7255-B | 0 | 4.49, 5.00, 6.11 7.00 7.42 | 567 (760) 537 (720) | 639 (857) 597 (801) | 745 (999) 684 (917) | 2500 | 1559 (3436) |
| MG-5202 SC | 1016103-C | 1, 0 Ind. | 1.17, 1.33, 1.53, 1.76, 2.03, 2.48, 2.92 3.48 | 540 (724) | 600 (805) | 678 (909) | 2500 | 587 (1292) |
| MG-5203 SC | 1016249-A | 1, 0 Ind. | 1.17, 1.33, 1.53, 1.76, 2.03, 2.48, 2.92 3.48 | 540 (724) | 600 (805) | 678 (909) | 2500 | 409 (900) |
| MG-5204 SC | 1016250-B | 1, 0 Ind. | 1.17, 1.33, 1.53, 1.76, 2.03, 2.48, 2.92 3.48 | 633 (849) 540 (724) | 716 (960) 600 (805) | 797 (1069) 678 (909) | 2750 (2500 at 1.17:1) | 409 (900) |
| MGX-5222 DC | 1022822-A | 1, 0 Ind. | 4.03, 4.59, 5.04, 6.10, 6.55, 6.96 | 540 (724) | 600 (805) | 678 (909) | 2500 | 1046 (2304) |
| MGX-5225 DC | 1022825-A | 1, 0 Ind. | 4.03, 4.59, 5.04, 5.57, 6.10 | 633 (849) | 716 (960) | 735 (986) | 2500 | 1046 (2304) |
| MGX-5321 DC | 1022203-B | 0, 00 Ind. | 3.35, 4.06, 4.42, 4.96, 5.46 5.96 6.39 | 882 (1183) 861 (1155) 737 (988) | 982 (1317) 955 (1281) 812 (1089) | 1000 (1341) 968 (1298) 905 (1214) | 2400 | 1754 (3864) |
| | | | | @ 1200 RPM | @ 1600 RPM | @ 1800 RPM | | |
| MG-540 (with rubber block drive) | X-9882-C | 0 00, Ind. | 1.93, 2.58, 2.90 3.26 3.91 4.60 5.17 6.18 7.00 7.47 | 708 (949) 638 (856) 559 (750) 682 (915) 638 (856) 496 (665) 466 (625) | 865 (1160) 809 (1085) 721 (967) 844 (1132) 809 (1085) 663 (889) 647 (868) | 943 (1265)* 895 (1200)* 802 (1075)* 925 (1240)* 895 (1200)* 895 (1200)* 746 (1000)* 738 (990)* | 1900* 2100* 2400* 1900* 2100* 2400* 2400* | 2019 (4450) 2105 (4640) |
| MG-540 (with flexible coupling) | X-9882-C | 0 00, Ind. | 1.93, 2.58, 2.90 3.26 3.91 4.60 5.17 6.18 7.00 7.47 | 787 (1055) 776 (1041) 648 (869) 787 (1055) 774 (1038) 644 (864) 571 (766) 535 (717) | 1049 (1407) 1034 (1387) 864 (1159) 1049 (1407) 1032 (1384) 859 (1152) 762 (1022) 715 (959) | 1180 (1582) 1163 (1560) 972 (1303) 1180 (1582) 1161 (1557) 966 (1295) 895 (1200) 804 (1078) | 1900 2100 2400 1900 2100 2400 2400 | 2019 (4450) 2105 (4640) |
| MG-5506 | 00D005604 | 0, 00 Ind. | 4.03, 4.55, 4.96, 5.44 6.00 | 937 (1257) 848 (1137) | 1249 (1675) 1130 (1515) | 1406 (1885) 1279 (1715) | 2000 | 2200 (4846) |
| MGX-5600 | 1022780 | 0, 00 Ind. | 2.53, 2.98, 3.51, 4.03, 4.63, 5.04 5.76 6.04 | 1230 (1649) 1200 (1609) 985 (1321) | 1575 (2112) 1566 (2100) 1271 (1704) | 1760 (2360) 1737 (2329) 1410 (1891) | 2100 | 3132 (6890) |
| MGX-5600DR | 1022781 | Ind. | 4.20, 6.02 6.56 7.01 7.22 | 1151 (1543) 1038 (1392) 964 (1293) 845 (1133) | 1564 (2097) 1458 (1955) 1352 (1813) 1088 (1459) | 1760 (2360) 1641 (2201) 1566 (2100) 1207 (1619) | 2100 | 3475 (7654) |

Important – See rating definitions, application information, and torsional compatibility notices on pages 1 and 2.
Ratings shown are in SAE Horsepower (HP). Metric Horsepower equals SAE times 1.014.
Weights are approximate and include flywheel housing adapter and flexible input coupling.

* The max. input speed is 1650 rpm if MG-540 - SAE #00 is used with 21" rubber block drive.



CONTINUOUS DUTY RATINGS FOR STANDARD & QUICKSHIFT® MARINE TRANSMISSIONS (Continued)

| Model | Drawing Number | SAE Housing | Ratios | KILOWATTS (HORSEPOWER) | | | Maximum Speed (rpm) | Dry Weight (kg (lb)) |
|--------------------|----------------|---------------|--|---|--|--|--------------------------------------|----------------------|
| | | | | @ 1200 RPM | @ 1600 RPM | @ 1800 RPM | | |
| MGN-1814 V | PPD007097 | Ind. | 2.53, 3.00, 3.29 3.62, 4.00 | 1548 (2076) | 2064 (2768) | 2322 (3114) | 1800 | 3000 (6608) |
| MGN-1816 V | PPD007098 | Ind. | 4.43, 4.85 5.33, 5.61 | 1548 (2076) | 2064 (2768) | 2322 (3114) | 1800 | 3800 (8370) |
| MGN-1817 V | PPD007099 | Ind. | 6.66, 6.56, 6.88 7.22, 7.59 | 1548 (2076) | 2064 (2768) | 2322 (3114) | 1800 | 4500 (9912) |
| MGN-1819 V | PLN005679 | Ind. | 8.88 | 1500 (2012) | 2000 (2682) | 2250 (3017) | 1800 | TBA (TBA) |
| | | | | @ 1600 RPM | @ 1800 RPM | @ 2100 RPM | | |
| MG-6449 A | 7-37423 | 1, 0 Ind. | 1.51, 1.73 2.07 2.44 2.95 | 640 (858) 529 (709) 462 (620) 413 (554) | 695 (932) 574 (770) 502 (673) 448 (601) | 778 (1043) 642 (861) 562 (754) 501 (672) | 2500 | 344 (757) |
| MG-6449 RV | 7-37431-A | — | 1.51, 1.73 2.07 2.44 2.95 | 640 (858) 529 (709) 462 (620) 413 (554) | 695 (932) 574 (770) 502 (673) 448 (601) | 778 (1043) 642 (861) 562 (754) 501 (672) | 2500 | 325 (716) |
| MGX-6598 DC | 7-40379 | 1, 0 Ind. | 2.46, 3.03 3.48 3.93 4.43 | 710 (952) 670 (898) 611 (819) 570 (764) | 771 (1034) 729 (978) 664 (890) 619 (830) | 858 (1151) 811 (1088) 739 (991) 690 (925) | 2500 | 580 (1278) |
| MGX-6599 SC | 7-40384 | 1, 0 Ind. | 1.07, 1.30, 1.50, 1.66, 1.74 1.97, 2.04, 2.19, 2.45 2.82 | 685 (919) 670 (898) 575 (771) | 744 (998) 728 (976) 624 (837) | 828 (1110) 806 (1081) 696 (933) | 2500 | 492 (1084) |
| MGX-6599 A | 7-40263 | 1, 0 Ind. | 1.34, 1.51, 1.74, 2.03, 2.24 2.48 2.80 | 706 (947) 668 (896) 644 (864) | 767 (1029) 728 (976) 699 (937) | 851 (1141) 804 (1078) 779 (1045) | 2500 | 488 (1075) |
| MGX-6599 RV | 7-40336 | — | 1.34, 1.51, 1.74, 2.03, 2.24 2.48 2.80 | 706 (947) 668 (896) 644 (864) | 767 (1029) 728 (976) 699 (937) | 851 (1141) 804 (1078) 779 (1045) | 2500 | 468 (1031) |
| MG-6600 DC | 7-36712-A | 0 Ind. | 3.30, 4.11 4.68, 4.72 5.22 6.05 | 637 (854) 623 (835) 534 (716) 473 (634) | 716 (960) 701 (940) 600 (805) 532 (713) | 835 (1120) 818 (1097) 699 (937) 621 (833) | 2500 | 794 (1747) |
| MGX-6620 SC | 7-40337 | 0 Ind. | 1.15, 1.33, 1.53, 1.73 2.03 2.32 2.44 2.72 | 827 (1109) 810 (1086) 805 (1080) 780 (1046) 723 (970) | 898 (1204) 879 (1179) 874 (1172) 847 (1136) 785 (1053) | 934 (1252) 934 (1252) 934 (1252) 934 (1252) 875 (1173) | 2500 | 575 (1267) |
| MGX-6620 A | 7-40264 | 0 Ind. | 1.55, 1.72, 2.09 2.28, 2.42 2.73 | 875 (1173) 767 (1029) 719 (964) | 950 (1274) 833 (1117) 780 (1046) | 1059 (1420) 928 (1244) 869 (1165) | 2500 | 580 (1278) |
| MGX-6620 RV | 7-40316 | — | 1.55, 1.72, 2.09 2.28, 2.42 2.73 | 875 (1173) 767 (1029) 719 (964) | 950 (1274) 833 (1117) 780 (1046) | 1059 (1420) 928 (1244) 869 (1165) | 2500 | 510 (1123) |
| MGX-6650 SC | 1002046 | 0, 00 Ind. | 1.51, 1.88, 2.03, 2.37 2.47, 2.93, 3.21 | 911 (1222) | 1025 (1375) | 1098 (1472) | 2300 (1.51–2.37) 2500 (2.47–3.21) | 1001 (2205) |
| MGX-6690 SC | 1020674 | 0, 00 Ind. | 1.51, 1.88, 2.03, 2.37, 2.47 2.93 3.21 | 1017 (1364) 977 (1310) 943 (1265) | 1129 (1514) 1069 (1434) 1028 (1379) | 1195 (1602) 1130 (1515) 1098 (1472) | 2300 (1.51–2.37) 2500 (2.47–3.21) | 1001 (2205) |
| MGX-6848 SC | 1020675 | 0, 00 Ind. | 1.51, 1.88, 2.03, 2.47, 2.58, 2.93 3.21 | 1111 (1490) 1074 (1440) | 1250 (1676) 1194 (1601) | 1420 (1904) 1350 (1810) | 2300 (1.51–2.03) 2500 (2.47–3.21) | 1001 (2205) |

Important – See rating definitions, application information, and torsional compatibility notices on pages 1 and 2.
Ratings shown are in SAE Horsepower (HP). Metric Horsepower equals SAE times 1.014.
Weights are approximate and include flywheel housing adapter and flexible input coupling.



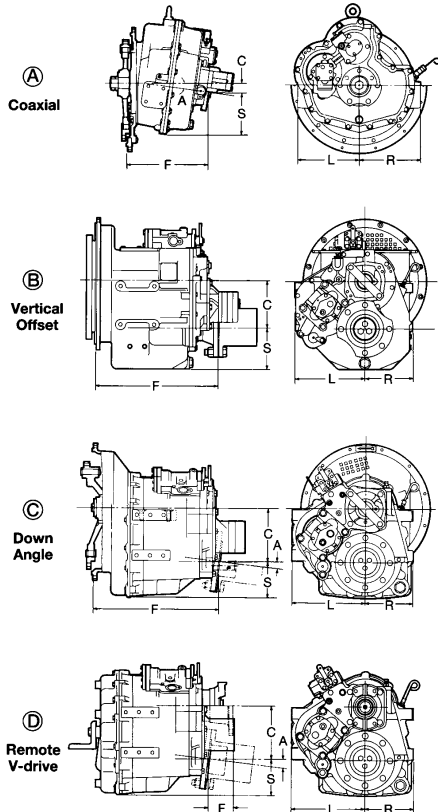
CONTINUOUS DUTY RATINGS FOR STANDARD & QUICKSHIFT® MARINE TRANSMISSIONS (Continued)



| Model | Drawing Number | SAE Housing | Ratios | KILOWATTS (HORSEPOWER) | | | Maximum Speed (rpm) | Dry Weight kg (lb) |
|--------------------|---------------------------------|-----------------|--|---|---|---|---------------------|--------------------|
| | | | | @ 1200 RPM | @ 1600 RPM | @ 1800 RPM | | |
| MG-6984 SC | 7-37008 7-37481 P-71034-B | Ind. 0 00 | 1.18, 1.54, 2.06, 2.29, 2.52, 2.92 3.25 3.43 | 884 (1185) 800 (1073) 602 (807) | 1178 (1580) 1066 (1430) 802 (1075) | 1326 (1778) 1200 (1609) 903 (1211) | 2100 | 1192 (2628) |
| MG-6984 A | 7-37028 P-71093 P-71094 | Ind. 0 00 | 1.48, 1.97, 2.50, 2.79 2.93 | 905 (1214) 867 (1163) | 1206 (1617) 1157 (1552) | 1356 (1818) 1301 (1745) | 2100 | 909 (2000) |
| MG-61242 SC | 7-37017 | Ind. | 1.16, 1.52 2.08, 2.47, 2.96 | 1250 (1676) 1173 (1573) | 1667 (2235) 1512 (2028) | 1875 (2514) 1760 (2360) | 2100 | 1050 (2310) |
| MG-61242 A | 7-37046 | Ind. | 1.42, 2.07 2.44 2.93 | 1239 (1661) 1189 (1594) 1173 (1573) | 1651 (2214) 1585 (2125) 1565 (2099) | 1858 (2492) 1782 (2390) 1760 (2360) | 2100 | 1105 (2431) |



TWIN DISC MG-300, MG-500, MG-5000 and MGX-5000 SERIES CONFIGURATIONS



TWIN DISC MGX-5000 (QuickShift®) SERIES DIMENSIONAL DATA

| Model | Assembly | Configuration | C (offset) in (mm) | S (sump) in (mm) | F (length) in (mm) | L (mounting pad) in (mm) | R (mounting pad) in (mm) | A degree | W (weight) lb (kg) |
|----------------|------------|---------------|--------------------|------------------|--------------------|--------------------------|--------------------------|----------|--------------------|
| MGX-5065 SC | PX-12410 | B | 6.00 (152) | 5.22 (133) | 13.30 (338) | 10.00 (254) | 6.50 (165) | — | 244 (111) |
| MGX-5065 A | PX-12370 | C | 6.69 (170) | 4.84 (123) | 12.97 (329) | 10.00 (254) | 6.50 (165) | 7 | 244 (111) |
| MGX-5075 SC | PX-12620 | A | 0.59 (15) | 7.00 (178) | 14.11 (358) | 10.00 (254) | 10.00 (254) | — | 268 (122) |
| MGX-5075 A | PX-12610 | A | 1.91 (48) | 7.00 (178) | 13.80 (350) | 10.00 (254) | 10.00 (254) | 7 | 268 (122) |
| MGX-5075 IV | PX-12630 | D* | 14.70 (373) | 3.93 (100) | 2.34 (59) | 10.00 (254) | 10.00 (254) | 15 | 330 (150) |
| MGX-5082 SC | PX-12600 | A | 0.59 (15) | 7.00 (178) | 16.24 (413) | 10.00 (254) | 10.00 (254) | — | 298 (135) |
| MGX-5082 A | PX-12290 | A | 2.12 (54) | 7.00 (178) | 15.97 (405) | 10.00 (254) | 10.00 (254) | 7 | 298 (135) |
| MGX-5095 SC | PX-12480 | B | 7.48 (190) | 6.14 (156) | 17.00 (432) | 10.43 (265) | 10.43 (265) | — | 419 (190) |
| MGX-5095 A | PX-12360 | C | 7.43 (189) | 5.54 (141) | 17.00 (432) | 10.43 (265) | 10.43 (265) | 7 | 407 (185) |
| MGX-5095 RV | PX-12550 | D | 7.43 (189) | 5.54 (141) | 2.37 (60) | 10.43 (265) | 10.43 (265) | 7 | 392 (178) |
| MGX-5114 SC | PX-12490 | B | 7.47 (190) | 6.33 (161) | 19.00 (483) | 11.00 (279) | 7.50 (191) | — | 447 (203) |
| MGX-5114 SC-HD | PX-12860 | B | 7.47 (190) | 6.33 (161) | 19.00 (483) | 11.00 (279) | 11.00 (279) | — | 595 (270) |
| MGX-5114 DC | PX-12170 | B | 10.90 (277) | 9.85 (250) | 19.03 (483) | 11.25 (286) | 11.25 (286) | — | 793 (360) |
| MGX-5114 A | 1024390 | C | 8.00 (203) | 5.30 (135) | 18.80 (479) | 11.00 (279) | 8.00 (203) | 7 | 455 (206) |
| MGX-5114 RV | PX-11850 | D | 8.00 (203) | 5.25 (133) | 2.51 (64) | 11.00 (279) | 8.00 (203) | 7 | 435 (198) |
| MGX-5114 IV | PX-12510 | D* | 16.26 (413) | 5.75 (146) | 2.43 (62) | 7.50 (191) | 11.50 (292) | 14 | 595 (270) |
| MGX-5135 SC | PX-12450 | B | 7.87 (200) | 7.48 (190) | 21.06 (535) | 12.01 (305) | 12.01 (305) | — | 661 (300) |
| MGX-5135 A | PX-12380 | C | 9.09 (231) | 6.28 (160) | 20.48 (520) | 12.01 (305) | 12.01 (305) | 10 | 617 (280) |
| MGX-5135 RV | PX-12520 | D | 9.09 (231) | 6.28 (160) | 3.70 (94) | 12.01 (305) | 12.01 (305) | 10 | 568 (258) |
| MGX-5145 SC | PX-12460 | B | 8.12 (206) | 7.04 (179) | 21.05 (535) | 12.01 (305) | 12.01 (305) | — | 716 (325) |
| MGX-5145 A | PX-12420 | C | 10.40 (264) | 6.13 (156) | 20.33 (516) | 12.01 (305) | 12.01 (305) | 10 | 734 (333) |
| MGX-5145 RV | PX-12530 | D | 10.40 (264) | 6.13 (156) | 4.93 (125) | 12.01 (305) | 12.01 (305) | 10 | 650 (295) |
| MGX-5147 SC | PX-12470-A | B | 8.12 (206) | 7.04 (179) | 21.05 (535) | 12.01 (305) | 12.01 (305) | — | 716 (325) |
| MGX-5147 A | PX-12430-A | C | 10.40 (264) | 6.13 (156) | 20.33 (516) | 12.01 (305) | 12.01 (305) | 10 | 734 (333) |
| MGX-5147 RV | PX-12540-A | D | 10.40 (264) | 6.13 (156) | 4.93 (125) | 12.01 (305) | 12.01 (305) | 10 | 650 (295) |
| MGX-516 DC | 1023380 | B | 13.29 (338) | 12.77 (324) | 20.59 (523) | 14.00 (356) | 14.00 (356) | — | 1580 (717) |
| MGX-5170 DC | 1023382 | B | 15.15 (385) | 14.23 (361) | 22.55 (573) | 15.00 (381) | 15.00 (381) | — | 1670 (759) |
| MGX-5222 DC | 1022822 | B | 15.75 (400) | 15.13 (384) | 25.08 (637) | 16.00 (406) | 16.00 (406) | — | 2304 (1046) |
| MGX-5225 DC | 1022825 | B | 15.75 (400) | 15.13 (384) | 25.08 (637) | 16.00 (406) | 16.00 (406) | — | 2304 (1046) |
| MGX-5321 DC | 1022203-B | B | 17.32 (440) | 16.77 (426) | 29.83 (758) | 17.32 (440) | 17.32 (440) | — | 3864 (1754) |
| MGX-5600 | 1022780 | B | 21.65 (550) | 21.26 (540) | 41.02 (1042) | 20.67 (525) | 20.67 (525) | — | 6890 (3132) |
| MGX-5600 DR | 1022781 | B | 8.85 (225) | 21.26 (540) | 50.63 (1286) | 20.67 (525) | 20.67 (525) | — | 7000 (3175) |

TWIN DISC MG-300, MG-500, MG-5000 SERIES CONFIGURATIONS

| Model | Assembly | Configuration | C (offset) in (mm) | S (sump) in (mm) | F (length) in (mm) | L (mounting pad) in (mm) | R (mounting pad) in (mm) | A degree | W (weight) lb (kg) |
|------------|--------------|---------------|--------------------|------------------|--------------------|--------------------------|--------------------------|----------|--------------------|
| MG-340 | IT40TD0002 | B | 2.66 (68) | 2.46 (63) | 7.17 (182) | — | 2.95 (75) | — | 20 (9) |
| MG-360 | IT60TD0002 | B | 3.10 (79) | 3.56 (93) | 9.65 (245) | — | — | — | 31 (14) |
| MG-5005 A | IT345ATD0001 | C | 4.37 (111) | 3.19 (81) | 8.82 (224) | — | — | 8 | 55 (25) |
| MG-5012 SC | IT93TD0001 | B | 4.35 (110) | 4.92 (125) | 10.14 (258) | 6.61 (168) | 6.61 (168) | — | 117 (53) |
| MG-5020 SC | IT170TD0001 | B | 5.18 (132) | 5.17 (131) | 10.53 (268) | 7.60 (193) | 7.60 (193) | — | 165 (75) |
| MG-5025 A | IT485ATD0001 | C | 4.96 (126) | 3.43 (87) | 10.63 (270) | 6.50 (165) | 6.50 (165) | 8 | 79 (36) |
| MG-5055 A | IT880ATD0002 | C | 6.10 (155) | 4.25 (108) | 10.51 (267) | 7.60 (193) | 7.60 (193) | 10 | 119 (54) |
| MG-5010 DC | PX-9400 | B | 6.56 (167) | 6.39 (162) | 9.80 (249) | 7.25 (184) | 6.95 (177) | — | 165 (75) |
| MG-5011 SC | PX-10270 | B | 4.10 (104) | 3.50 (89) | 8.59 (218) | 6.75 (171) | 5.00 (127) | — | 109 (49) |
| MG-5011 A | PX-9999 | C | 4.65 (118) | 3.66 (93) | 7.62 (194) | 6.75 (171) | 5.00 (127) | 10 | 104 (47) |
| MG-5011 IV | PX-10290 | D* | 10.09 (256) | 6.75 (171) | 5.00 (124) | 6.75 (171) | 5.00 (127) | 15 | 170 (77) |
| MG-5050 SC | PX-12700 | B | 5.28 (134) | 4.69 (119) | 12.78 (325) | 8.13 (207) | 5.85 (149) | — | 189 (86) |
| MG-5050 A | PX-12730 | C | 5.52 (140) | 3.68 (93) | 12.10 (307) | 8.13 (207) | 5.85 (149) | 10 | 176 (80) |
| MG-5050 RV | PX-8760 | D | 5.52 (140) | 3.68 (93) | 4.61 (117) | 8.13 (207) | 5.85 (149) | 10 | 160 (73) |
| MG-506-1 | XA-7022-A | A | coax (0) | 7.90 (201) | 10.03 (255) | 7.12 (181) | 7.12 (181) | — | 220 (100) |
| MG-506-1 | XA-7048-A | A | coax (0) | 7.90 (201) | 10.42 (265) | 7.12 (181) | 7.12 (181) | — | 227 (103) |

* Ringed P/Ns are close coupled to engine housing. /Applied Dimensions may vary with housing options or output torque.

Use certified drawings for installation. By weight an approximation and may vary by input and ratio. Specifications are subject to design without notice.



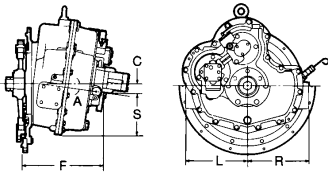
TWIN DISC MG-300, MG-500 and MG-5000 SERIES CONFIGURATIONS (Continued)

TWIN DISC MG-300, MG-500, MG-5000 SERIES CONFIGURATIONS

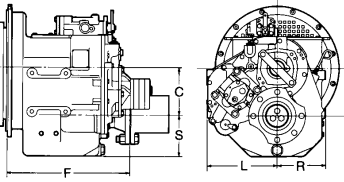
(Continued)

| Model | Assembly | Configuration | C (offset) in (mm) | S (sump) in (mm) | F (length) in (mm) | L (mounting pad) in (mm) | R (mounting pad) in (mm) | A degree | W (weight) lb (kg) |
|---------------|-------------|---------------|--------------------|------------------|--------------------|--------------------------|--------------------------|----------|--------------------|
| MG-5061 SC | PX-11650-A | B | 5.66 (144) | 4.84 (123) | 13.18 (335) | 8.40 (213) | 6.15 (156) | — | 215 (98) |
| MG-5061 A | PX-11640-A | C | 5.75 (146) | 4.21 (107) | 12.53 (318) | 8.40 (213) | 6.16 (156) | 7 | 210 (95) |
| MG-5061 V | PX-8735 | D | 5.75 (146) | 4.21 (107) | 2.78 (71) | 8.40 (213) | 6.16 (156) | 7 | 190 (86) |
| MG-5062 V | PX-11660-A | D* | 13.03 (331) | 3.97 (101) | 4.00 (102) | 8.40 (213) | 6.15 (156) | 15 | 312 (142) |
| MG-5065 SC | PX-11480 | B | 6.00 (152) | 5.22 (133) | 13.30 (338) | 10.00 (254) | 6.50 (165) | — | 244 (111) |
| MG-5065 A | PX-11165 | C | 6.69 (170) | 4.84 (123) | 12.97 (329) | 10.00 (254) | 6.50 (165) | 7 | 244 (111) |
| MG-5075 SC | PX-11876 | A | 0.59 (15) | 7.00 (178) | 14.11 (358) | 10.00 (254) | 10.00 (254) | — | 268 (122) |
| MG-5075 A | PX-10680-A | A | 0.59 (15) | 7.00 (178) | 14.11 (358) | 10.00 (254) | 10.00 (254) | — | 268 (122) |
| MG-5075 IV | PX-10700-A | A | 1.91 (48) | 7.00 (178) | 13.80 (350) | 10.00 (254) | 10.00 (254) | 7 | 268 (122) |
| MG-5082 SC | PX-11530 | D* | 14.70 (373) | 3.93 (100) | 2.34 (59) | 10.00 (254) | 10.00 (254) | 15 | 330 (150) |
| MG-5082 A | PX-11250-A | A | 0.59 (15) | 7.00 (178) | 16.24 (413) | 10.00 (254) | 10.00 (254) | — | 298 (135) |
| MG-5082 V | PX-11040-B | A | 2.12 (54) | 7.00 (178) | 15.97 (405) | 10.00 (254) | 10.00 (254) | 7 | 298 (135) |
| MG-5085 SC | PX-9260-B-C | B | 6.00 (152) | 5.25 (133) | 14.67 (373) | 10.00 (254) | 6.50 (165) | — | 265 (120) |
| MG-5085 A | PX-9360-B-C | C | 6.69 (170) | 4.84 (123) | 14.69 (373) | 10.00 (254) | 6.50 (165) | 7 | 270 (123) |
| MG-509 | X9816-F | B | 6.82 (173) | 5.85 (149) | 15.62 (397) | 10.25 (260) | 10.25 (260) | — | 572 (259) |
| MG-509 | X9835 | B | 9.49 (241) | 9.40 (240) | 17.38 (441) | 11.12 (282) | 11.12 (282) | — | 712 (323) |
| MG-5091 SC | PX-10016 | B | 6.82 (173) | 6.22 (158) | 16.59 (421) | 10.25 (260) | 6.94 (176) | — | 485 (220) |
| MG-5091 DC | 1002155 | B | 9.49 (241) | 9.60 (244) | 18.09 (459) | 11.12 (282) | 11.12 (282) | — | 655 (297) |
| MG-5090 A | PX-10015 | C | 7.30 (185) | 5.05 (128) | 17.07 (434) | 10.25 (260) | 7.00 (178) | 7 | 475 (215) |
| MG-5095 SC | PX-11535 | B | 7.48 (190) | 6.14 (156) | 17.00 (432) | 10.43 (265) | 10.43 (265) | — | 419 (190) |
| MG-5095 A | PX-11495 | C | 7.43 (189) | 5.54 (141) | 17.00 (432) | 10.43 (265) | 10.43 (265) | 7 | 407 (185) |
| MG-5095 RV | PX-11600 | D | 7.43 (189) | 5.54 (141) | 2.37 (60) | 10.43 (265) | 10.43 (265) | 7 | 392 (178) |
| MG-5114 SC | PX-9785-B | B | 7.47 (190) | 6.33 (161) | 19.00 (483) | 11.00 (279) | 7.50 (191) | — | 447 (203) |
| MG-5114 SC-HD | PX-11962 | B | 7.47 (190) | 6.33 (161) | 19.00 (483) | 11.00 (279) | 11.00 (279) | — | 595 (270) |
| MG-5114 DC | PX-10250-A | B | 10.90 (277) | 9.85 (250) | 19.03 (483) | 11.25 (286) | 11.25 (286) | — | 800 (364) |
| MG-5114 A | PX-11915 | C | 8.00 (203) | 5.30 (133) | 18.80 (479) | 11.00 (279) | 8.00 (203) | 7 | 455 (206) |
| MG-5114 RV | PX-9830-A | D | 8.00 (203) | 5.25 (133) | 2.51 (64) | 11.00 (279) | 8.00 (203) | 7 | 435 (198) |
| MG-5114 IV | PX-11920 | D* | 16.26 (413) | 5.75 (146) | 2.43 (62) | 7.50 (191) | 11.50 (292) | 14 | 595 (270) |
| MG-514C SC | X9784-C | B | 9.32 (237) | 9.77 (248) | 19.51 (496) | 14.75 (375) | 12.75 (324) | — | 1155 (524) |
| MG-514C DC | X9786-C | B | 13.29 (338) | 12.77 (324) | 22.14 (562) | 14.00 (356) | 14.00 (356) | — | 1450 (658) |
| MG-5135 SC | PX-11590 | B | 7.87 (200) | 7.48 (190) | 21.06 (535) | 12.01 (305) | 12.01 (305) | — | 661 (300) |
| MG-5135 A | PX-11380 | C | 9.09 (231) | 6.28 (160) | 20.48 (520) | 12.01 (305) | 12.01 (305) | 10 | 617 (280) |
| MG-5135 RV | PX-11945 | D | 9.09 (231) | 6.28 (160) | 3.70 (94) | 12.01 (305) | 12.01 (305) | 10 | 568 (258) |
| MG-5145 SC | PX-10885 | B | 8.12 (206) | 7.04 (179) | 21.05 (535) | 12.01 (305) | 12.01 (305) | — | 716 (325) |
| MG-5145 A | PX-10830 | C | 10.40 (264) | 6.13 (156) | 20.33 (516) | 12.01 (305) | 12.01 (305) | 10 | 734 (333) |
| MG-5145 RV | PX-10880 | D | 10.40 (264) | 6.13 (156) | 4.93 (125) | 12.01 (305) | 12.01 (305) | 10 | 650 (295) |
| MG-5145 IHP | X87255-B | B | 16.44 (418) | 16.55 (420) | 30.86 (784) | 16.00 (406) | 16.00 (406) | — | 3436 (1560) |
| MG-5202 SC | 1016103-C | B | 9.75 (248) | 8.75 (222) | 23.45 (595) | 14.75 (375) | 10.50 (267) | — | 1275 (580) |
| MG-5203 SC | 1016249-A | B | 9.75 (248) | 8.75 (222) | 23.43 (595) | 14.75 (375) | 10.50 (267) | — | 900 (409) |
| MG-5204 SC | 1016250-B | B | 9.75 (248) | 8.75 (222) | 23.43 (595) | 14.75 (375) | 10.50 (267) | — | 900 (409) |
| MG-5321 DC | 1015339-A | B | 17.32 (440) | 16.77 (426) | 29.83 (758) | 17.32 (440) | 17.32 (440) | — | 3696 (1678) |
| MG-540 | X9882-C | B | 8.08 (205) | 13.45 (342) | 36.47 (926) | 16.00 (406) | 16.00 (406) | — | 4450 (2019) |
| MG-5506 | 000005604 | B | 19.29 (490) | 19.29 (490) | 39.17 (995) | 20.08 (510) | 20.08 (510) | — | 4846 (2200) |
| MGN-1814 V | DDP007097 | B | 16.73 (425) | 19.69 (500) | 55.12 (1400) | 27.56 (700) | 23.62 (600) | — | 6608 (3000) |
| MGN-1816 V | DDP007098 | B | 21.26 (540) | 22.83 (580) | 55.12 (1400) | 29.53 (750) | 29.53 (750) | — | 8370 (3800) |
| MGN-1817 V | DDP007099 | B | 26.38 (670) | 27.56 (700) | 55.12 (1400) | 31.50 (800) | 31.50 (800) | — | 9912 (4500) |
| MGN-1819 V | PLN005679 | B | 30.71 (780) | 33.46 (850) | 55.12 (1400) | 37.40 (950) | 37.40 (950) | — | TBA (TBA) |

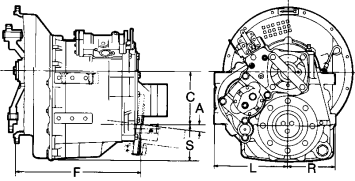
A
Coaxial



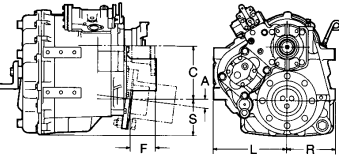
B
Vertical Offset



C
Down Angle



D
Remote V-drive

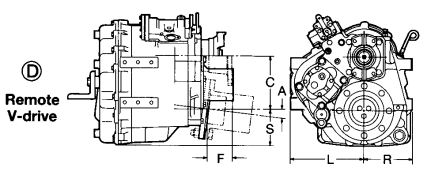
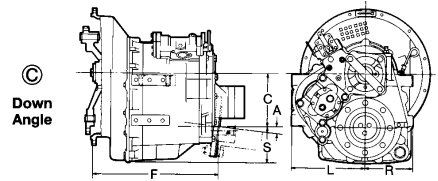
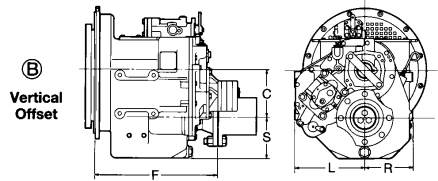
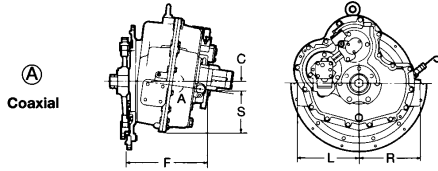


* Inlet and P-line is closed coupled to engine housing. * Inlet and P-line dimensions may vary with housing options or output torque.

Use certified drawings for installation. By weight and equipment and vary by input and ratio. Specifications are subject to design without notice.



TWIN DISC MG-6000 and MGX-6000 SERIES CONFIGURATIONS



TWIN DISC MGX-6000 (QuickShift®) SERIES DIMENSIONAL DATA

| Model | Assembly | Configuration | C (offset) in (mm) | S (sump) in (mm) | F (length) in (mm) | L (mounting pad) in (mm) | R (mounting pad) in (mm) | A degree | W (weight) lb (kg) |
|---------------|----------|---------------|-----------------------|---------------------|-----------------------|-----------------------------|-----------------------------|-------------|-----------------------|
| MGX-6598 DC | 7-40379 | B | 12.20 (310) | 10.83 (275) | 23.72 (603) | 14.17 (360) | 14.17 (360) | — | 1278 (580) |
| MGX-6599 SC | 7-40384 | B | 8.66 (220) | 9.29 (236) | 23.31 (592) | 13.39 (340) | 13.39 (340) | — | 1084 (492) |
| MGX-6599 A | 7-40263 | C | 11.70 (297) | 6.25 (159) | 22.60 (574) | 13.39 (340) | 13.39 (340) | 10 | 1075 (488) |
| MGX-6599 RV | 7-40336 | D | 11.70 (297) | 6.25 (159) | 7.95 (202) | 13.39 (340) | 13.39 (340) | 10 | 1031 (468) |
| MGX-6620 SC | 7-40337 | B | 9.25 (235) | 9.25 (235) | 27.48 (698) | 13.39 (340) | 13.39 (340) | — | 1267 (575) |
| MGX-6620 A | 7-40264 | C | 12.44 (316) | 7.25 (184) | 25.70 (653) | 13.39 (340) | 13.39 (340) | 10 | 1278 (580) |
| MGX-6620 RV | 7-40316 | D | 12.44 (316) | 7.25 (184) | 6.57 (167) | 13.39 (340) | 13.39 (340) | 10 | 1123 (510) |
| MGX-6650 A | 1002046 | B | 12.21 (310) | 11.81 (300) | 30.13 (765) | 17.32 (440) | 17.32 (440) | — | 2205 (1001) |
| MGX-6690 SC | 1020674 | B | 12.21 (310) | 11.81 (300) | 30.13 (765) | 17.32 (440) | 17.32 (440) | — | 2205 (1001) |
| MGX-6848 SC | 1020675 | B | 12.21 (310) | 11.81 (300) | 30.13 (765) | 17.32 (440) | 17.32 (440) | — | 2205 (1001) |
| MGX-61000 SC* | 1024420 | B | 14.96 (380) | 14.17 (360) | 39.08 (993) | 19.29 (490) | 19.29 (490) | — | 1780 (3920) |
| MGX-61500 SC* | 1022390 | B | 18.11 (460) | 15.63 (397) | 40.63 (1032) | 18.23 (463) | 18.23 (463) | — | 1920 (4230) |

TWIN DISC MG-6000 SERIES DIMENSIONAL DATA

| Model | Assembly | Configuration | C (offset) in (mm) | S (sump) in (mm) | F (length) in (mm) | L (mounting pad) in (mm) | R (mounting pad) in (mm) | A degree | W (weight) lb (kg) |
|-------------|-----------|---------------|-----------------------|---------------------|-----------------------|-----------------------------|-----------------------------|-------------|-----------------------|
| MG-6449 A | 7-37423 | C | 10.83 (275) | 4.92 (125) | 20.83 (529) | 12.01 (305) | 12.01 (305) | 10 | 757 (344) |
| MG-6449 RV | 7-37431-A | D | 10.88 (276) | 6.44 (164) | 6.32 (161) | 12.01 (305) | 12.01 (305) | 10 | 782 (355) |
| MG-6600 DC | 7-36712-A | B | 14.17 (360) | 14.96 (380) | 30.87 (784) | 14.76 (375) | 14.76 (375) | — | 1747 (794) |
| MG-6984 SC | 7-37008 | B | 12.21 (310) | 11.30 (287) | 27.20 (691) | 17.52 (445) | 17.52 (445) | — | 2628 (1192) |
| MG-6984 A | 7-37028 | C | 15.04 (382) | 8.50 (216) | 26.93 (684) | 17.52 (445) | 17.52 (445) | 10 | 1991 (905) |
| MG-6984 RV | 7-37042 | D | 15.04 (382) | 8.50 (216) | 11.82 (300) | 17.52 (445) | 17.52 (445) | 10 | 2002 (910) |
| MG-61242 SC | 7-37017 | B | 13.39 (340) | 12.17 (309) | 29.80 (757) | 19.69 (500) | 19.69 (500) | — | 2310 (1050) |
| MG-61242 A | 7-37046 | C | 17.52 (445) | 9.49 (241) | 30.35 (771) | 19.69 (500) | 19.69 (500) | 10 | 2431 (1105) |
| MG-61242 RV | 7-37049 | D | 17.52 (445) | 9.49 (241) | 11.34 (288) | 19.69 (500) | 19.69 (500) | 10 | 2475 (1125) |

* Gear® Twin Disc for availability of MG61000 SC and MG61500 SC, all sizes. Dimensions may vary with housing adapter or output flange.

Dimensions may vary with adapter or output flange. Weights are approximate and may vary by input and ratio. Use critical drawings for installation. Specifications are subject to change without notice.



TWIN DISC, INCORPORATED

1328 Racine Street • Racine, Wisconsin 53403 USA
Telephone: +1 (262) 638-4000 • Telefax: +1 (262) 638-4480

TWIN DISC INTERNATIONAL SA

Chaussee de Namur, 54
B-1400 Nivelles
Belgium
Telephone: +32 (0) 67 887.211
Telefax: +32 (0) 67 887.333
E-mail: tdbelgium@twindisc.com

TWIN DISC SRL

Via S Cristoforo 131
40017 S. Matteo della Decima (BO)
Italy
Telephone: +39 051 6819711
Telefax: +39 051 6824234
6825814
E-mail: info@technodrive.it

TWIN DISC SRL

Via E.e.P. Salani I
50050 Limite sull'Arno (FI)
Italy
Phone: +39 0571 979111
Telefax: +39 0571 979143
E-Mail: bcs@bcsmarine.com

TWIN DISC, INC.

Latin America Office
11700 NW 101 Rd. Suite 19
Medley, Florida 33178
USA
Telephone: +1 (305) 887-9050
Telefax: +1 (305) 887-9090
E-mail: eberhardt.erwin@twindisc.com

TWIN DISC (PACIFIC) PTY. LTD.

Brisbane Main Office
40 Telford St.
Virginia Queensland 4014
Australia
Telephone: +61 (7) 3265-1200
Telefax: +61 (7) 3865-1371
E-mail: twindisc.brisbane@twindisc.com.au

TWIN DISC (FAR EAST) LTD.

40 Lok Yang Way
Jurong
Singapore 628643
Telephone: +65 62670800
Telefax: +65 62642080
E-mail: enquiry@twindisc.com.sg

TWIN DISC, INC.

Shanghai Representative Office
Room 2108, Shartex Plaza
88 Zunyi Road (S)
Shanghai, China 200336
Telephone: +86 (21) 6427 3212
+86 (21) 6209 7626
Telefax: +86 (21) 6209 7629
E-mail: tdchina@online.sh.cn

Guangzhou Representative Office
Room 1405, Xingchen Building
172 Huasui Road
Zhujiangxincheng
Guangzhou, China 510623
Telephone: +86 (20) 3837 2927
Telefax: +86 (20) 3759 1441
E-mail: jason.yang@twindisc.com.cn

ROLLA SP PROPELLERS SA

Via Roncaglia 6
P.O. Box 109
6883 Novazzano
Switzerland
Phone: + 41 (0) 91 695 2000
Telefax: + 41 (0) 91 695 2001
E-mail: info@rolla-propellers.ch

TWIN DISC JAPAN

Twin Disc Nico Co. Ltd.
405-3, Yoshinocho 1-chome, Kita-ku
Saitama-shi, Saitama-ken
331-0811
Japan
Phone: +81 (48) 652-8069
Telefax: +81 (48) 665-6695
E-Mail: info@tdnico.com





TWIN DISC, INCORPORATED



M. Knöpfli AG
Wiesackerstr. 128
8105 Regensdorf
Tel: ++41 44 840 62 21
info@m-knoepfli.com

Belgium
Ireland